



Remote power control of four power outlets

ePowerSwitch 4+ is a network manageable Power Distribution Unit (PDU) with built-in Web server, Ethernet and USB connection.

It enables to manage 4 Power outlets over a browser, SNMP and HTTP commands or locally over an USB Terminal connection.

IP devices monitoring rules

Its Auto-Reboot function lets monitor four IP devices (server, router, camera...) powered over the power sockets of the ePowerSwitch and automatically reboot them in case of lock-up.

Programmable

Up to 32 rules with various actions which can be automatically triggered, e.g. switching Power outlets of the ePowerSwitch, sending e-mails or SNMP traps.

Scheduler and Timer rules

These rules, in combination with the internal real-time clock of the ePowerSwitch, enable planned rules to be triggered precisely.

Accounts and IP Security

Up to 40 concurrent user accounts with restricted rights can be created by the administrator.

Access to the server of the ePowerSwitch is protected by name and password using MD5 authentication.

Programmable labels

No confusion during operations, all power outlets, user accounts and rules can be identified using 32-character labels.

Developer facility

Developers can activate a special protected page to implement the control of the power outlets in their own programs.

On, off and restart functions

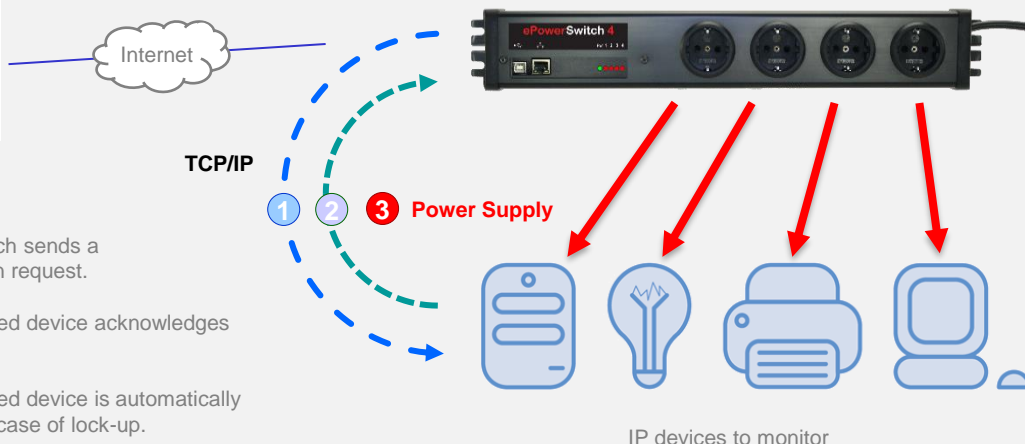
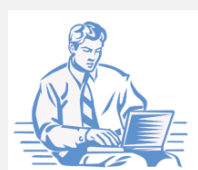
The sockets can be individually controlled using a browser, over HTTP or SNMP Get commands and also over an USB Terminal connection.

Restart delay

A restart delay for the reboot function can be set for each power outlets.

Easy and fast configuration

The configuration of the ePowerSwitch is done using a web browser. Alternatively, the provided Windows tool enables a quick installation of the network parameters, regardless of the PC IP addressing



Benefits

- ▶ Remote power control of four power outlets
- ▶ Programmable rules
- ▶ Supported protocols: TCP/IP, HTTP, DHCP, SNMP, SMTP, NTP, Syslog
- ▶ Free definable labels for the device, power outlets, rules
- ▶ Control and configuration over IP and USB connection
- ▶ IP device monitoring and Auto-Reboot of crashed devices
- ▶ 1 administrator account
- ▶ 40 users accounts with restricted access
- ▶ Easy and fast configuration
- ▶ Status LEDs for power input, network and power outlets
- ▶ Log file reporting
- ▶ Online contextual help
- ▶ Firmware updateable over the LAN

Models



French standard - Ref: ESP 4+ FR
4 French sockets
1 Integrated Power cable with Euro/Schuko Plug



German standard - Ref: ESP 4+ DE
4 German Schuko sockets
1 Integrated Power cable with Euro/schuko Plug

What's included

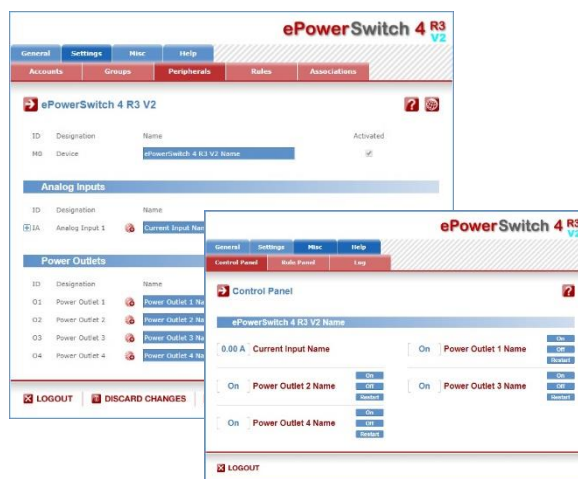
- ▶ 1 rack mountable ePowerSwitch 4+ with integrated Euro power cable 2,0 m
- ▶ 1 RJ45 Network cable 1,80 m
- ▶ 1 CD-ROM containing:
 - Windows IP configuration tool
 - Data sheet
 - Quick Start Guide
 - User guide in English

Technical features

Nominal input voltage	100-240VAC – 50/60Hz
Max. total load	10A
Max. load per socket	10A
Number of outlets	4 (FR or DE; see Reference above)
Network standards	IEEE 802.3, 10/100 Mbit/s
Network protocols	TCP/IP, HTTP
Network connection	RJ-45 for FTP or STP CAT5
Network cable length	100 m (max.)
Terminal connection	USB 2.0 Type-B male
LED	Power, Network traffic, Socket status
Operating temperature	0°C to 40°C
Operating humidity	10% to 80%
Dimensions (LxWxH)	485 x 74 x 47 mm
Weight	1 Kg
Approvals	CE, EN55022 & EN55024, RoHS
Guarantee	2 years repair or replace

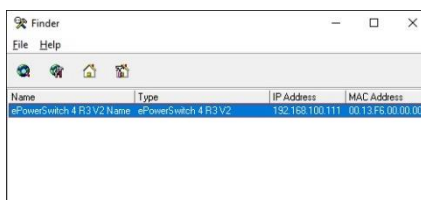
User-friendly web interface

The settings for the device and the control of the power outlets are organized over a secure web interface.



Windows configuration tool

This Windows program provides an easy way to configure your ePowerSwitch with initial settings of the network parameters.



DISTRIBUTOR



professionelle kvm lösungen

kvm-concepts gmbh
Schwalbenweg 12
D-53757 Sankt Augustin
Telefon: +49 (0)2241 240 9 600
Telefax: +49 (0)2241 240 9 609
E-Mail: info@kvm-concepts.de

All modifications reserved • EPS 4+ Datasheet 20210118