

CE790 Digital KVM Extender

Graphical User Interface (GUI)

User Manual



FCC Information

This is an FCC Class A product. In a domestic environment this product may cause radio interference in which case the user may be required to take adequate measures.

This equipment has been tested and found to comply with the limits for a Class A digital device, pursuant to Part 15 of the FCC Rules. These limits are designed to provide reasonable protection against harmful interference when the equipment is operated in a commercial environment. This equipment generates, uses and can radiate radio frequency energy and, if not installed and used in accordance with the instruction manual, may cause harmful interference to radio communications. Operation of this equipment in a residential area is likely to cause harmful interference in which case the user will be required to correct the interference at his own expense.

RoHS

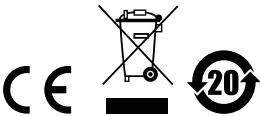
This product is RoHS compliant.

SJ/T 11364-2006

The following contains information that relates to China.

部件名称	有毒有害物质或元素					
	铅	汞	镉	六价铬	多溴联苯	多溴二苯醚
电器部件	●	○	○	○	○	○
机构部件	○	○	○	○	○	○

- : 表示该有毒有害物质在该部件所有均质材料中的含量均在SJ/T 11363-2006规定的限量要求之下。
- : 表示符合欧盟的豁免条款，但该有毒有害物质至少在该部件的某一均质材料中的含量超出SJ/T 11363-2006的限量要求。
- ×: 表示该有毒有害物质至少在该部件的某一均质材料中的含量超出SJ/T 11363-2006的限量要求。



CE790 GUI Operation

Overview

A CE790 installation can be managed via a Graphical User Interface (GUI) on a computer running a Windows operating system connected on the same local area network. To use the GUI management utility, you must install two types of software on a computer(s) that is not part of the CE790 installation. This procedure is detailed in the following sections.

Before You Begin

Use the instructions below to install both applications on a computer(s) that is not part of the CE790 installation. Computers installed with the software that are used to manage the CE790 installation must be connected to the same local area network as the CE790 installation. You must install the WinPcap application first and then install the CE790 AP.

WinPcap

The CE790 GUI is a WinPcap-based application. WinPcap is the industry-standard tool for link-layer network access in Windows environments. For further information, go to www.winpcap.org.

To install WinPcap on your PC, do the following:

1. Download the WinPcap executable file from the website, and run it.
2. Follow the instructions on the screen. The installation applet will automatically detect the operating system and install the correct drivers
3. WinPcap-based applications are now ready to work. Download the CE790 AP as below.

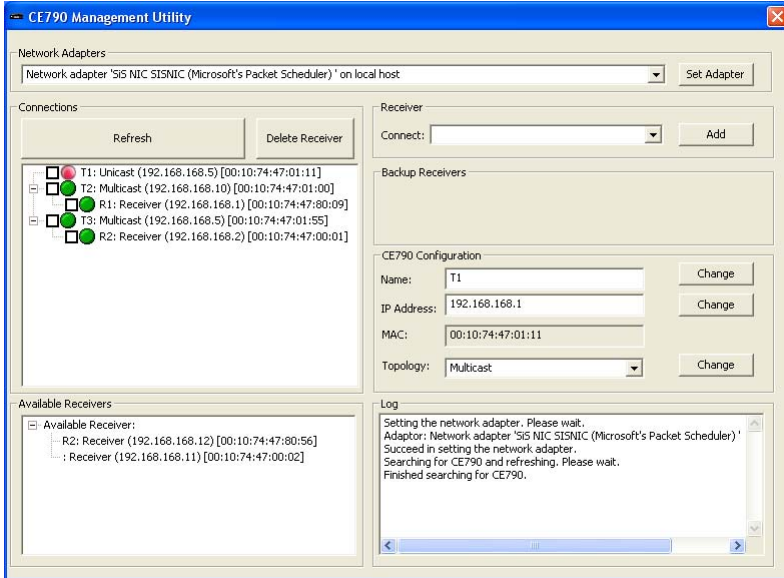
CE790 AP

To download the WinPcap-based CE790 AP in order to use the Browser GUI to manage your CE790 installation, do the following:

1. Download the CE790 AP from the ATEN website (www.aten.com).
2. Save the file to a convenient location.
3. Click on the file to open the CE790 GUI.

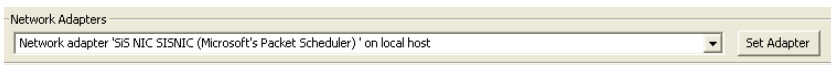
GUI Main Page

The CE790 Management Utility is a convenient and intuitive method to manage your complete CE790 installation from one screen. To invoke the GUI, simply click on the *CE790_GUI_V2.1.204.exe* executable file. The main page appears:



The various elements of the GUI are described in the following sections.

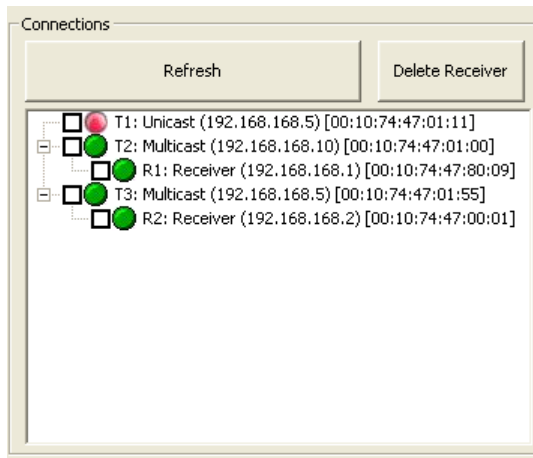
Network Adapters



The *Network Adapters* section has a drop-down menu with a list of the network adapters on the PC that are available to work with this application. To select a network adapter, do the following:

1. Select an adapter from the drop-down menu.
2. Click **Set Adapter** to confirm your selection.

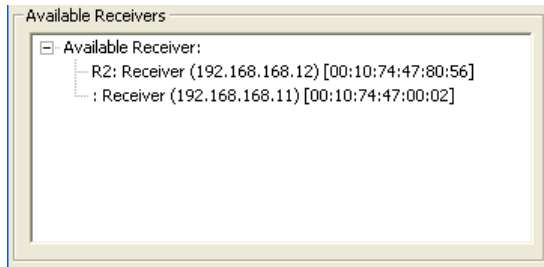
Connections



The *Connections* section displays the connections between the CE790T Transmitters and CE790R Receivers in the installation. It also displays basic configuration information for each unit – topology (Unicast or Multicast – Transmitters only); IP address; and Mac address.

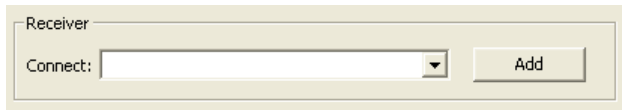
- ♦ To view the latest list of CE790T Transmitter and CE790R Receiver units currently connected in the installation, click **Refresh**.
- ♦ To disconnect a CE790R Receiver from a CE790T Transmitter in the installation, tick the checkbox next to the Receiver and click **Delete Receiver**.

Available Receivers



The *Available Receivers* section displays the CE790R Receivers that are currently attached to the installation and are available for connection. Select a CE790R Receiver in this list to view detailed information in the *CE790 Configuration* section. See *CE790 Configuration*, page 7.

Receivers



The *Receiver* section has a drop-down menu of CE790R Receivers that are available to connect to CE790T Transmitters.

- ♦ To connect a CE790T Transmitter to a CE790R Receiver, select a Transmitter in the *Connections* section (see page 5) by ticking its checkbox. Then, select a CE790R Receiver from this drop-down menu and click **Add**. The Transmitter connects to the selected Receiver.

CE790 Configuration

CE790 Configuration

Name:	<input type="text" value="T1"/>	<input type="button" value="Change"/>
IP Address:	<input type="text" value="192.168.168.1"/>	<input type="button" value="Change"/>
MAC:	<input type="text" value="00:10:74:47:01:11"/>	
Topology:	<input type="text" value="Multicast"/>	<input type="button" value="Change"/>

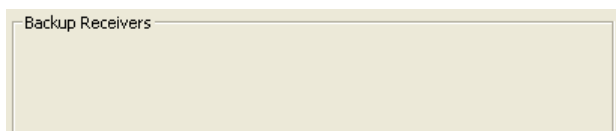
The *CE790 Configuration* section displays details about the Transmitter or Receiver units that have been selected, and allows you to change the configuration information of the selected unit.

- ♦ *Name* – Each unit can be given a name (15 characters or less, upper case only)
- ♦ *IP Address* – The unit's IP address can be changed here.
- ♦ *MAC* – The unit's MAC address displays here.
- ♦ *Topology* – The unit's topology can be configured here. Options are **Multicast** and **Unicast**.
 - ♦ Select Multicast if you want the selected CE790T to be able to connect to multiple CE790Rs.
 - ♦ Select Unicast if you want the selected CE790T to be able to connect to a single CE790R only.

Note: Only CE790T Transmitters have configurable topology.

After you have made each of your changes, click **Change** to confirm your selection.

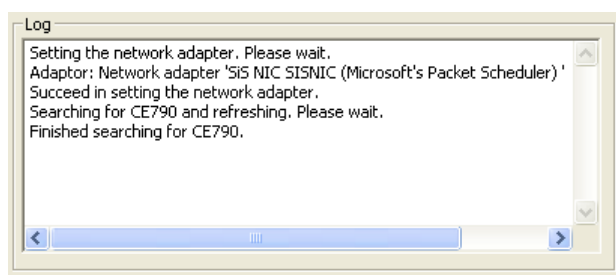
Backup Receivers



The *Backup Receivers* section displays the backup CE790R Receivers for selected CE790T Transmitters, depending on the CE790T's topology (see page 7).

- ♦ If the selected CE790T is configured as "Unicast," you can set one CE790R as *Backup 1*. The CE790T will attempt to connect to this backup CE790R if it loses the connection with its current CE790R for more than five seconds.
- ♦ If the selected CE790T is configured as "Multicast," you can set two CE790Rs as *Backup 1* and *Backup 2*. The CE790T will attempt to connect to Backup 1 if it loses the connection with its current one for more than five seconds; then it will try Backup 2; then Backup 1 again, and so on.

Log



The *Log* section displays all the events that take place in the Browser GUI, in addition to displaying error messages.