



## Introduction

Welcome .....	2
AdderLink ipeps+ features .....	3
Supplied items .....	4
Optional extras .....	5

## Installation

Locations .....	6
Mounting .....	6
Connections .....	6
Computer connections .....	7
Video format conversion .....	8
Console connections .....	10
Link connection .....	11
Audio connection .....	11
Power connection .....	12

## Configuration

Initial configuration .....	13
Firmware upgrade .....	15

## Operation

Connecting with the host computer(s) .....	16
Local connections .....	16
Remote connections .....	17
Controls .....	19
File Transfer .....	22
Indicators .....	23

## Further information

Getting assistance .....	24
Appendix 1 - Local console menus .....	25
Hosts page .....	26
General page .....	27
Network page .....	28
Logging (Diagnostics) page .....	29
Reset page .....	30
Appendix 2 - Remote configuration menus (via VNC) .....	31
User Accounts .....	32
Menu Bar Edit (Gui Edit Configuration) .....	33
Unit Configuration .....	34
EDID Configuration .....	35
Console Configuration .....	36
Advanced Unit Configuration .....	37
Time & Date Configuration .....	40
Network Configuration .....	41
Setting IP Access Control .....	42
Serial Port Configuration .....	43
Host Configuration .....	44
Logging and Status .....	45
LDAP Configuration .....	46
Appendix 3 - Networking issues .....	47
Positioning AdderLink ipeps+ in the network .....	47
Appendix 4 - Security considerations .....	50
Appendix 5 - Product compatibility .....	51
Appendix 6 - Hotkey sequences .....	52
Appendix 7 - Open source licenses .....	53

## Index

# Introduction



## WELCOME

Thank you for choosing the **AdderLink ipeps+** KVM-over-IP module. Using the tried and trusted RealVNC® software, each AdderLink ipeps+ module provides highly secure remote connectivity across the Internet or corporate network. The AdderLink ipeps+ module naturally permits secure remote access to a single host, however, with the addition of a suitable KVM switch, a choice of many hosts becomes possible.

### Highly secure

Enterprise grade security (using AES 128 or 256-bit encryption and RSA 2048-bit public key authentication) is employed as standard. This is further enhanced by VNC®, which allows the creation of ciphered user communications.

### User management

The AdderLink ipeps+ can create up to 15 user profiles (plus the admin user) with defined access rights. LDAP integration with Active Directory is provided for enterprise level user authentication. Up to 8 remote users may access the unit simultaneously, subject to available network bandwidth and content.

## High quality remote video

Despite its small size the AdderLink ipeps+ offers video streaming at resolutions up to 1920 x 1200 with non-blocking access for one local user and up to eight remote users.

HDMI™ is the native video port on the AdderLink ipeps+ module, however, using suitable third party converters you can also connect DVI or dual-mode DisplayPort™ (DP++) signals:

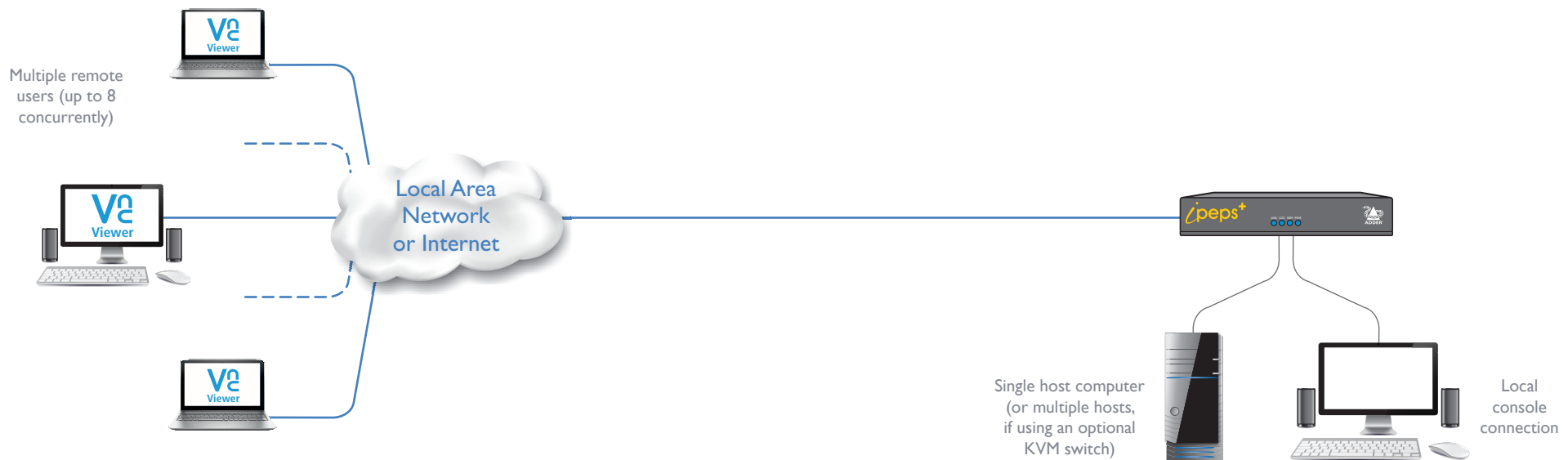


## EDID management

The AdderLink ipeps+ has intelligent EDID management allowing the user to specify the video modes generated by the controlled device.

## Local console

KVM connections are available for local user access. This may be useful during emergency and system maintenance activities.



INSTALLATION

CONFIGURATION

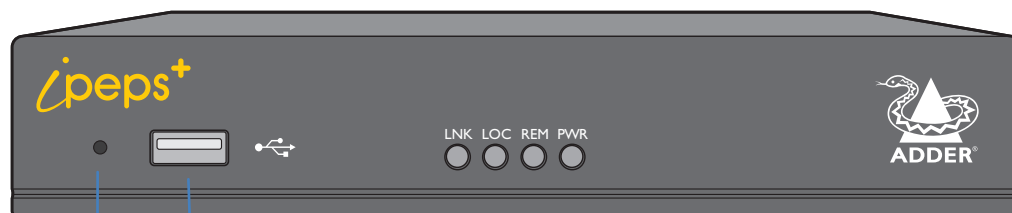
OPERATION

FURTHER INFORMATION

INDEX

## ADDERLINK IPEPS+ FEATURES

The AdderLink ipeps+ module is contained within slimline metal casing measuring just 169 x 112 x 31mm.



**Recessed recover button**

**USB port**  
Available for local console use.

**Status indicators**

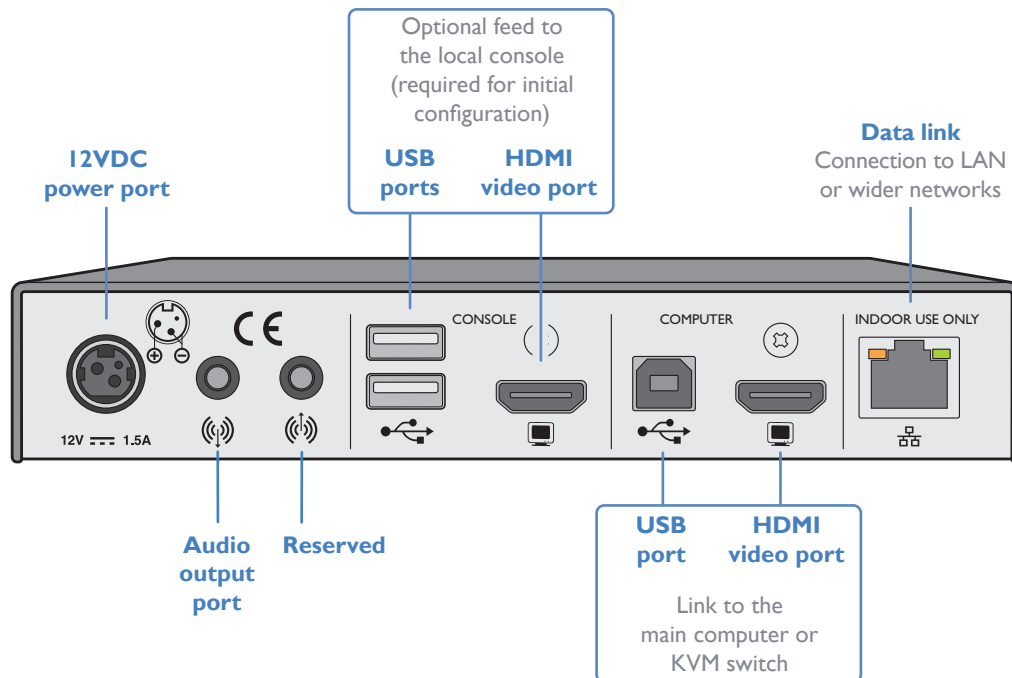
These provide visual confirmation of various system functions. See [Indicators](#) for further details.

**LNK** - On when a network link is made.

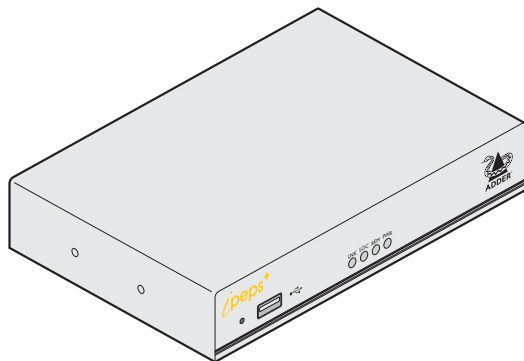
**LOC** - On when a local user is logged in, flashes with keyboard and/or mouse activity.

**REM** - On when a remote VNC user is logged in, flashes with keyboard and/or mouse activity.

**PWR** - On blue when power is present, flashing red when upgrading or in recovery mode.

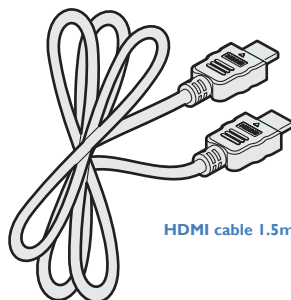
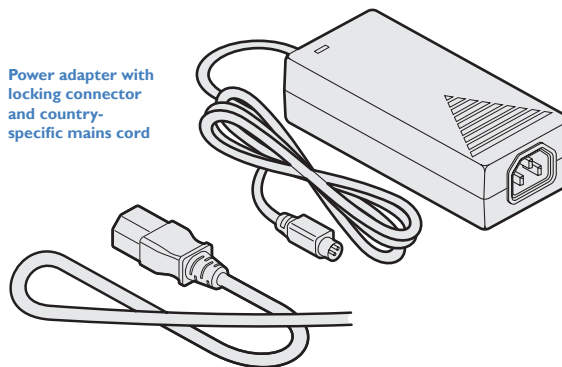


## SUPPLIED ITEMS

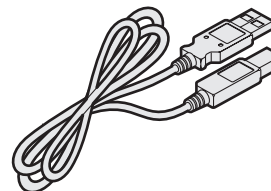


AdderLink ipeps+ module

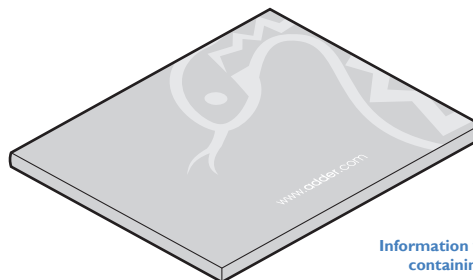
Power adapter with  
locking connector  
and country-  
specific mains cord



HDMI cable 1.5m

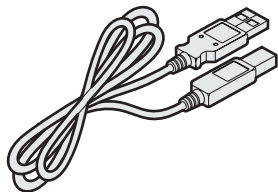


USB cable 2m (type A to B)



Information wallet  
containing:  
Quick setup guide  
Eight self-adhesive rubber feet  
Safety document

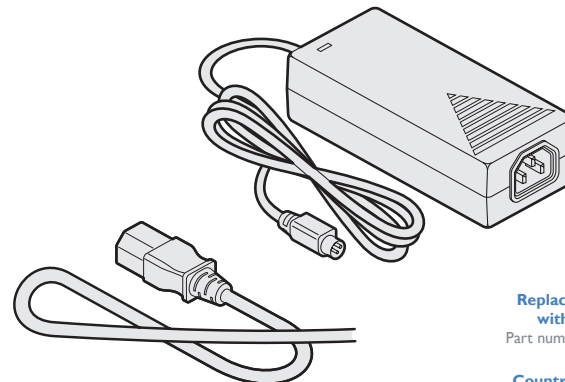
## OPTIONAL EXTRAS



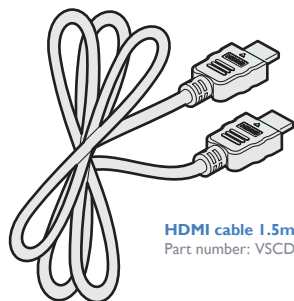
**USB cable 2m (type A to B)**  
Part number: VSC24



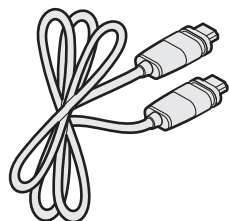
**HDMI/DVI-D passive converter cable 2m**  
Part number: VSCD11



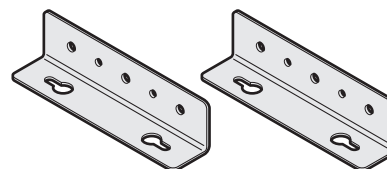
**Replacement power adapter  
with locking connector**  
Part number: PSU-IEC-12VDC-1.5A



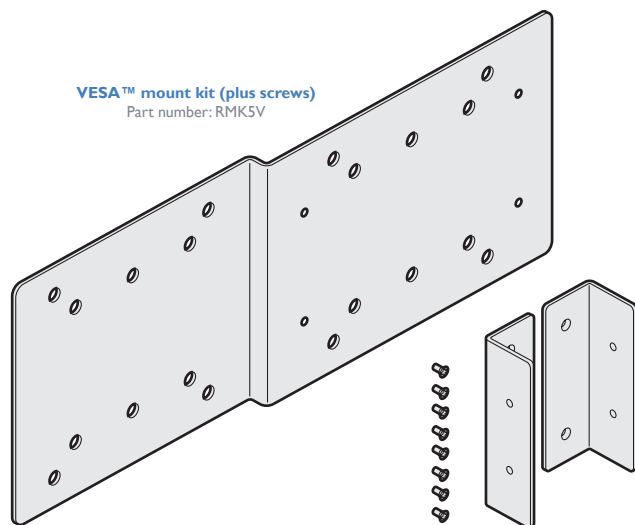
**HDMI cable 1.5m**  
Part number: VSCD15



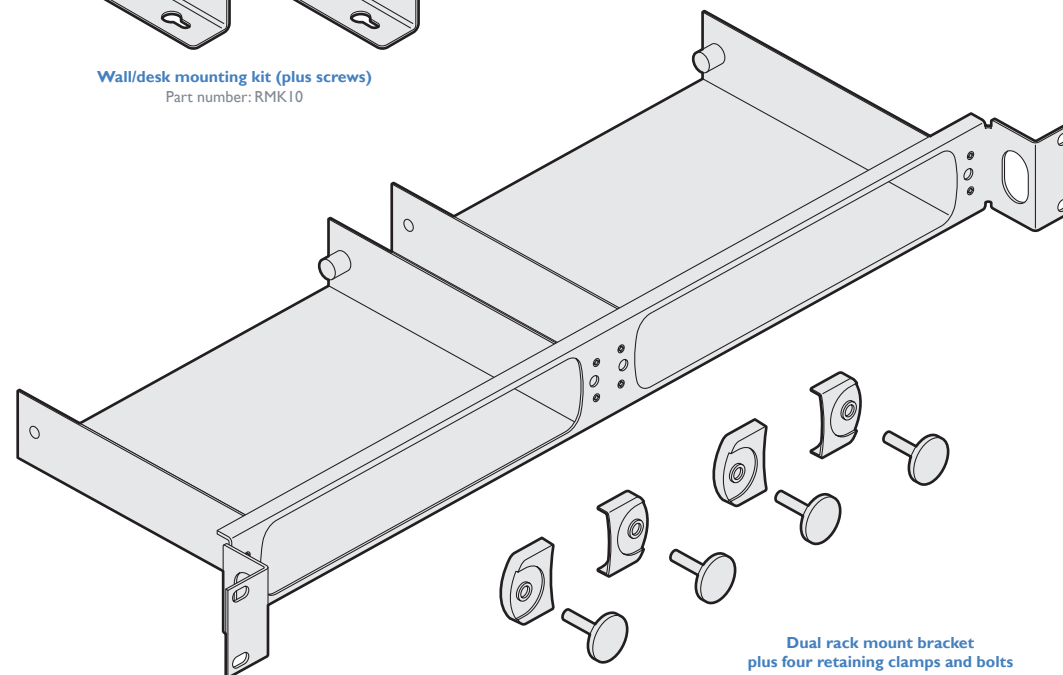
**Lockable HDMI cable 1.5m**  
Part number: VSCD12



**Wall/desk mounting kit (plus screws)**  
Part number: RMK10



**VESA™ mount kit (plus screws)**  
Part number: RMK5V



**Dual rack mount bracket  
plus four retaining clamps and bolts**  
Part number: RMK8

INSTALLATION

CONFIGURATION

OPERATION

FURTHER  
INFORMATION

INDEX

## LOCATIONS

Please consider the following important points when planning the position of the AdderLink ipeps+ module:

- Situate the AdderLink ipeps+ module close to the system to which it will be connected and near to a source of mains power.
- Connections do not need to be carried out in the order given within this guide, however, to follow best practice, connect the *power in* as a final step.

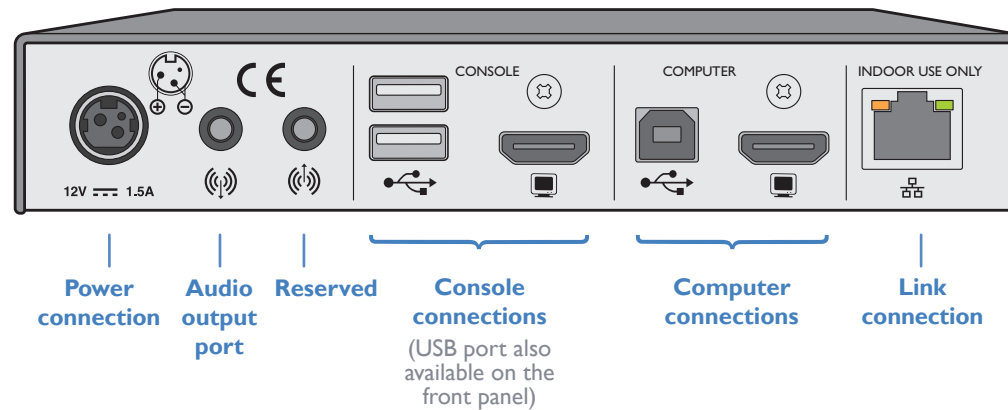
## MOUNTING

Before you begin making connections to the AdderLink ipeps+ module, it is advisable to first mount it in place, either:

- On a horizontal surface using the supplied self adhesive feet, or
- On a vertical surface using the optional wall/desk mounting kit, or
- Within an optional rack mount bracket.

## CONNECTIONS

All connections are grouped into five main areas:



The pages that follow discuss the various connections.



## Computer connections

The main connections to the host computer involves the HDMI™ video and USB ports. Video resolutions up to 1920 x 1200 @ 30 frames per second are supported, however, HDMI audio is not supported.

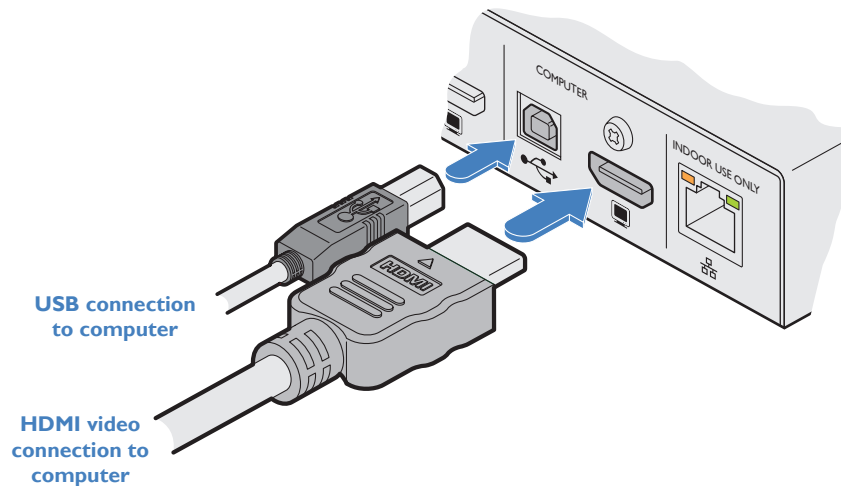
Where connection to multiple host computers is required, connect these ports to a suitable KVM switch, such as the AdderLink Infinity, DDX, XDIP and AV-4-Pro.

### To make computer connections

- 1 Insert the supplied HDMI cable between the HDMI video socket (in the **COMPUTER** section) and the video output port on the computer (or KVM switch).

HDMI offers the great advantage that it is a straightforward task to convert its signals to and from other common video formats (DisplayPort™, DVI and VGA) - See page 8.

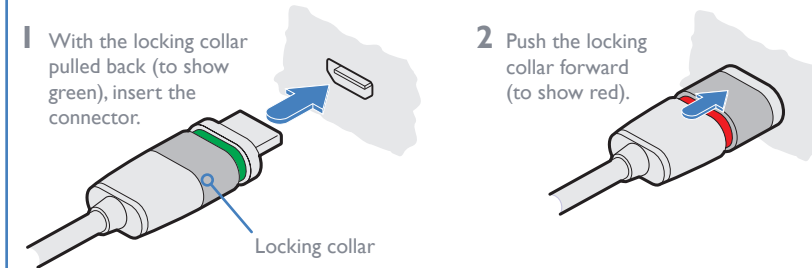
- 2 Insert the supplied USB type A to type B cable between the USB socket (in the **COMPUTER** section) and a vacant USB port on the computer.



## Using the optional Adder HDMI cable with locking connectors

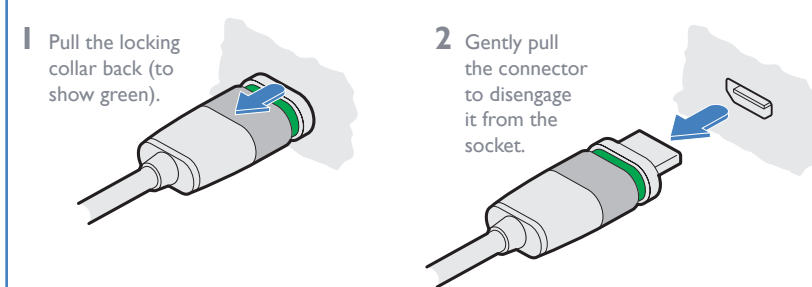
The optional VSCD12 HDMI cable features locking mechanisms on its connectors to prevent accidental disconnections. Please follow the procedures below when inserting and removing them:

### Insertion



**IMPORTANT:** Do not attempt to insert or remove the connector while the red band is shown.

### Removal

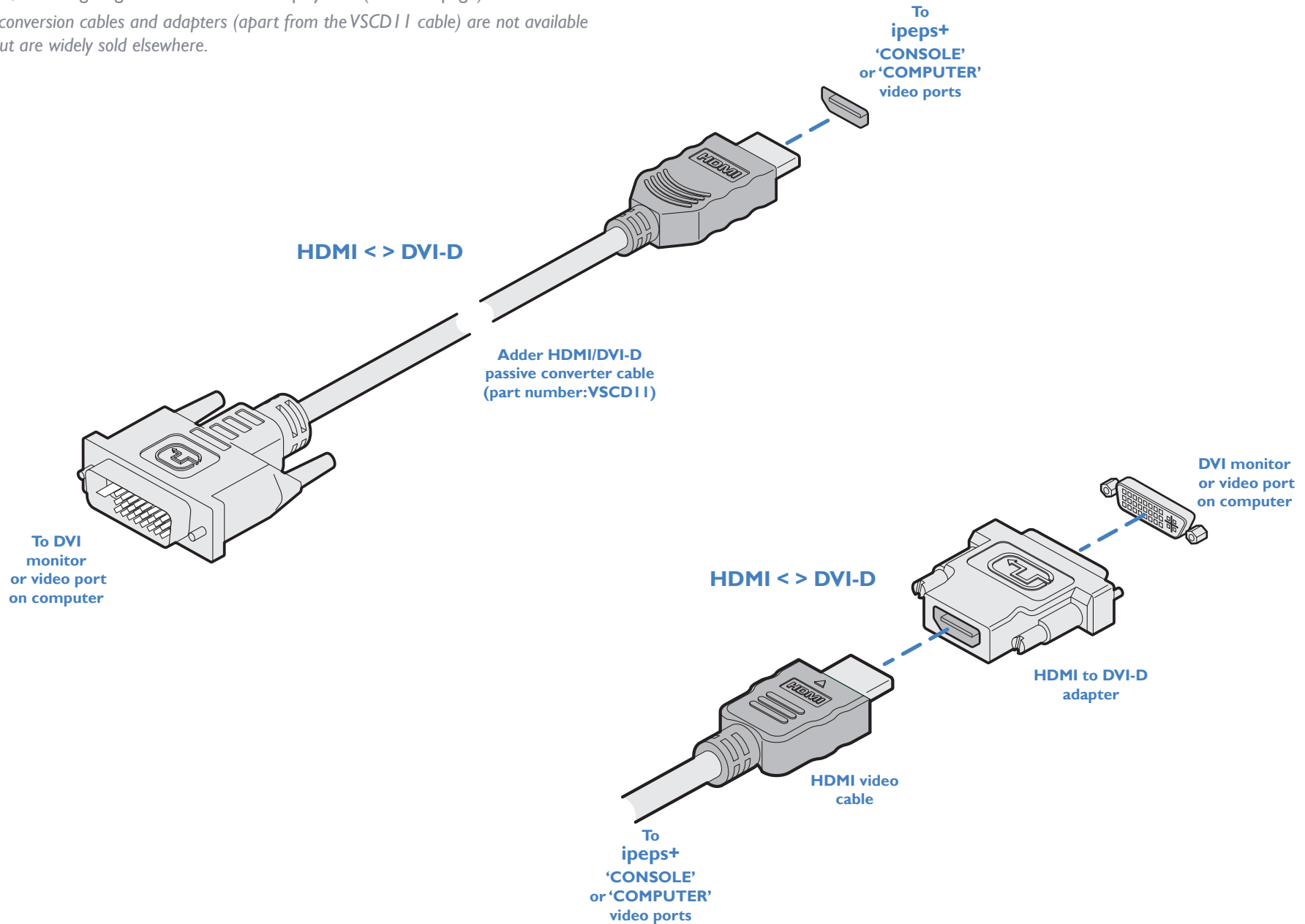




## Video format conversion

One of the many advantages offered by the HDMI (High Definition Multimedia Interface) standard is the ease with which it can be converted into- and out of- numerous other video formats, including single link DVI-D and DisplayPort (see next page).

*Note: HDMI conversion cables and adapters (apart from the VSCD11 cable) are not available from Adder, but are widely sold elsewhere.*



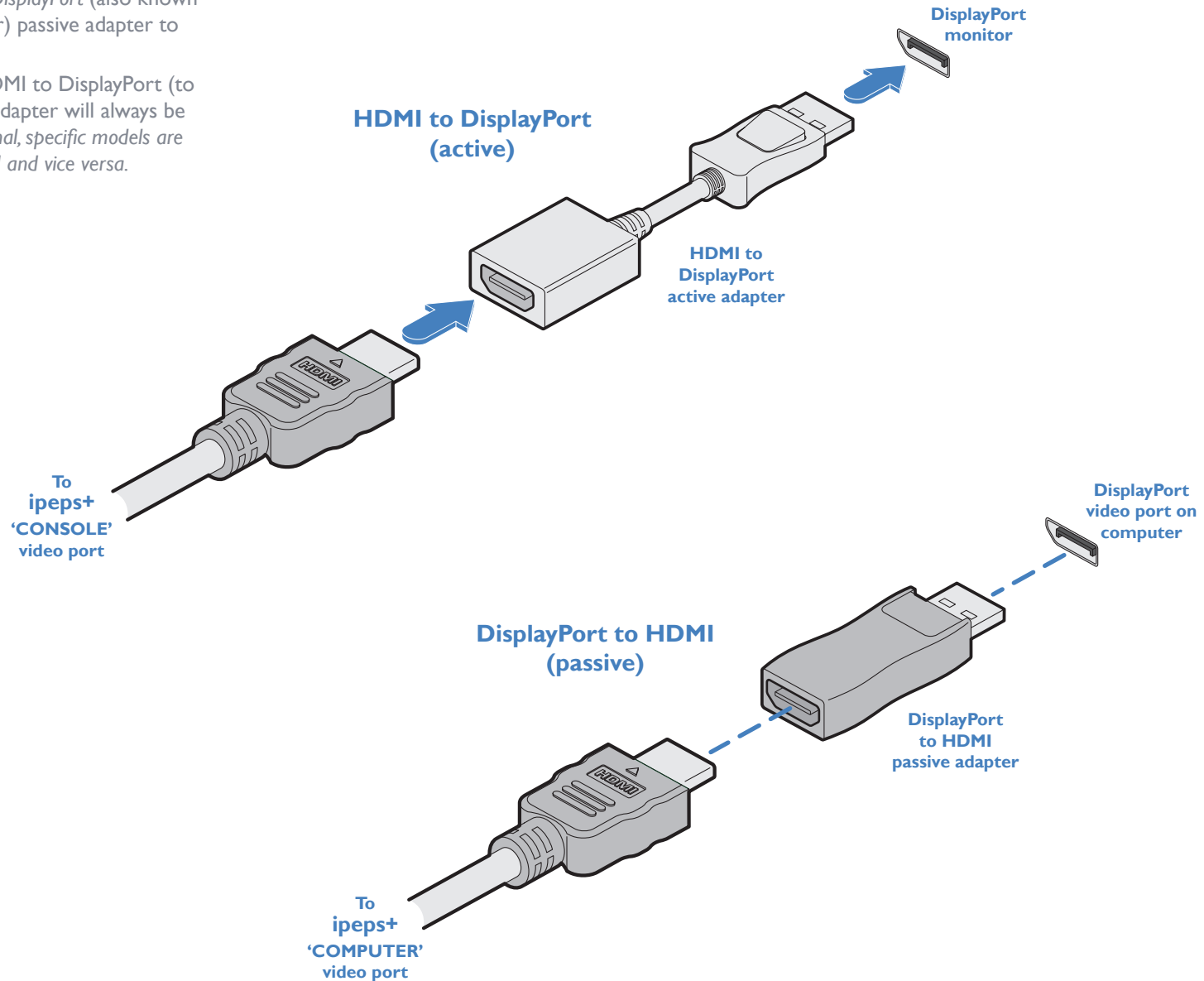
## Video format conversion (continued)

### DisplayPort/HDMI adapters - active or passive?

The choice of whether to use an active or passive adapter depends primarily upon the signal source.

If your computer outputs *Dual-mode DisplayPort* (also known as DP++), then you can use a (cheaper) passive adapter to derive a *Single-link HDMI* feed.

Conversely, when converting from HDMI to DisplayPort (to use with a DisplayPort monitor), the adapter will always be active. *Note: Adapters are not bi-directional, specific models are required to go from DisplayPort to HDMI and vice versa.*

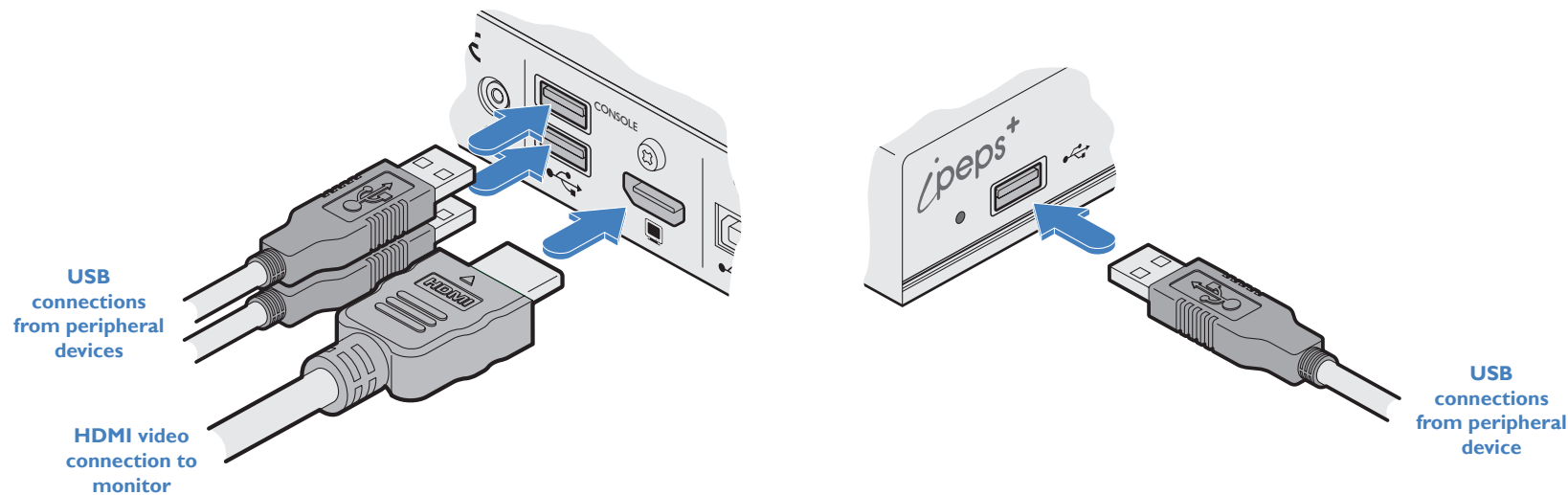


## Console connections

The console connections (video monitor and/or USB peripherals) allow initial configuration and local control/monitoring of the AdderLink ipeps+ module. Once the initial configuration has been completed, the retention of the console connections is optional. Video resolutions up to 1920 x 1200 @ 30 frames per second are supported, however, HDMI audio is not supported.

### To make console connections

- 1 Insert the supplied HDMI cable between the HDMI video socket (in the **CONSOLE** section) and the video port on your monitor.  
HDMI offers the great advantage that it is a straightforward task to convert its signals to and from other common video formats (DisplayPort and DVI) - See page 8.
- 2 Connect the USB leads from your mouse and keyboard to the two sockets on the rear panel. The single socket on the front panel is also available (all three USB ports operate in the same manner).



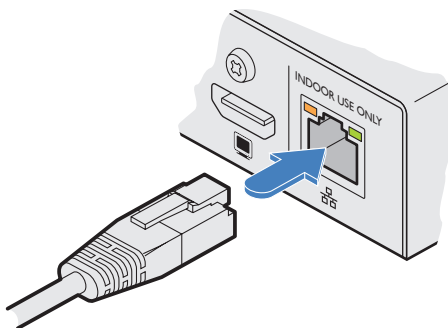
## Link connection

Use the link connection to join the AdderLink ipeps+ module to a suitable network switch. It is also possible to connect a computer directly to the network port for configuration purposes.

### To make a link connection

- 1 Insert a standard network cable into the socket on the far right of the rear panel.

Link cable  
either directly  
to a network  
switch or  
configuration  
computer




- 2 Connect the other end of the cable either directly to a suitable network switch.

## Audio connection

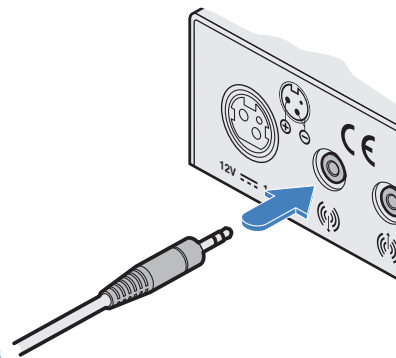
Audio transfer from the host PC is not supported. The audio output port is used to play out a short tone to the local user that indicates when a remote connection is active.

### To make audio connection

- 1 Connect your audio output (e.g. speakers or headphones, etc.) to the audio output (left hand) 3.5mm socket labeled  on the rear panel. Headphones are supported up to 32 Ohms impedance.

*Note: The audio input port is reserved for future use.*

To speakers

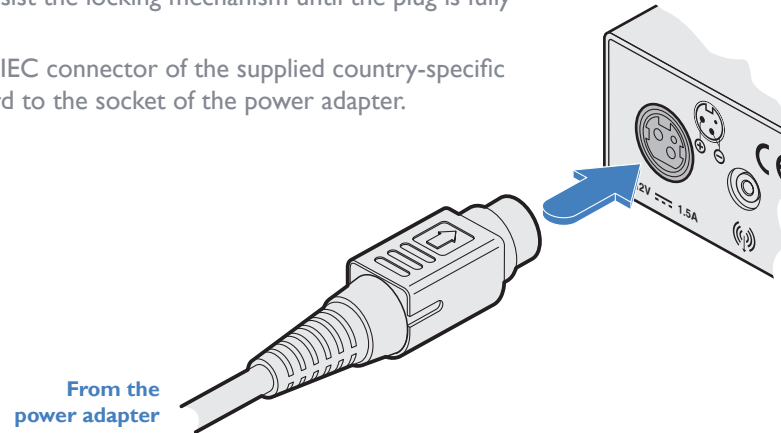


## Power connection

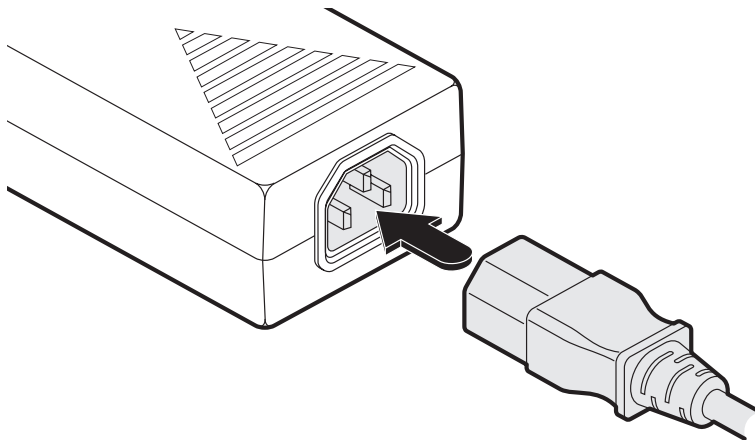
The module is powered using its supplied power adapter, which uses a locking-type plug to help prevent accidental disconnections; please follow the instructions shown on the right when disconnecting the power adapter.

### To connect the power adapter

- 1 Attach the output plug of the supplied power adapter to the power input socket on the left side of the rear panel. As you insert the plug, pull back slightly on the outer body to assist the locking mechanism until the plug is fully inserted.
- 2 Insert the IEC connector of the supplied country-specific power cord to the socket of the power adapter.

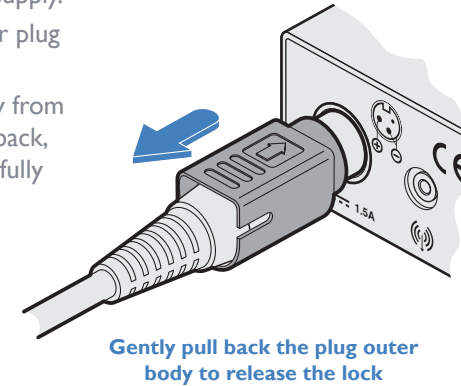


- 3 Connect the power cord to a nearby mains supply socket.



### To disconnect the power adapter

- 1 Isolate the power adapter from the mains supply.
- 2 Grasp the outer body of the power adapter plug where it connects with the module.
- 3 Gently pull the body of the outer plug away from the module. As the body of the plug slides back, it will release from the socket and you can fully withdraw the whole plug.



**IMPORTANT:** Do not use an unearthed power socket or extension cable.

*Note:* The power supply generates heat when in operation and will become warm to the touch. Do not enclose it or place it in locations where air cannot circulate to cool the equipment. Do not operate the equipment in ambient temperatures exceeding 40 degrees Centigrade. Do not place the products in contact with equipment whose surface temperature exceeds 40 degrees Centigrade.

# Configuration



## INITIAL CONFIGURATION

The initial configuration is carried out first using the locally connected console keyboard, mouse and video monitor; in order to set the basic network features. This is followed later using a remotely connected computer running the VNC® Viewer application to fine tune and complete the configuration process.

### To perform the initial configuration

- 1 Connect the AdderLink ipeps+ module as discussed on pages 6 to 12. To carry out a complete configuration, the module must:
  - Have a local console connection, and
  - Be connected either to a valid network or have a computer connected directly to the network port, to allow a remote VNC connection to take place.
- 2 As the AdderLink ipeps+ module is powered on for the first time it will display the first of two configuration wizard pages:

See page 27 for details.

**AdderLink ipeps+ Unit Config**

Serial No. 1811A1234567  
Firmware v0.00.0016- 16:41 06/11  
Keybd Layout < UK >  
Admin Passwd   
Unit Name   
Hot Keys < Ctrl+Alt >  
Screensaver < 10 mins >  
Time < 21 > < 17 > < 04 >  
Date < 05 > < Nov > < 2018 >  
Encryption < Prefer Off >

Screen 1 of 2 Next

**ADDER®**  
THE IP KVM PEOPLE

Note: If the module has previously been configured the wizard may not be shown. Move the mouse connected to the AdderLink ipeps+ module to display the login dialog or, if already logged in, enter CTRL + ALT + C to display the main menu. You can then either use the [Network](#) and [General](#) pages to enter the configuration details or use the [Reset](#) page to perform a factory reset, which will cause the configuration wizard to be displayed. The default username is **admin**, while the **password** is initially left blank.

- 3 Within the initial wizard page you can achieve tasks such as:

- Change the admin password,
- Apply a name to the AdderLink ipeps+ module,
- Set the time and date,
- Determine the encryption method used.

- 4 Click the Next button to move on to the second page:

See page 28 for details.

**AdderLink ipeps+ Network Config**

Mac Address 00:0F:58:04:91:2F  
UseDHCP < No >  
IP Address 192.168.1.42  
Net Mask 255.255.255.0  
Gateway   
DNS Server   
VNC Port 5900  
HTTP Port 80

Screen 2 of 2 Next

**ADDER®**  
THE IP KVM PEOPLE

- 5 Use the options within the Network page to configure the basic network settings according to how the AdderLink ipeps+ is linked and then click the Next button.

The login dialog will be displayed. If required, enter the username and password and press the Enter key. The default username is **admin**, while the **password** is initially left blank. Note: On the first login, the user will be forced to set a new password.

**AdderLink ipeps+ Login**

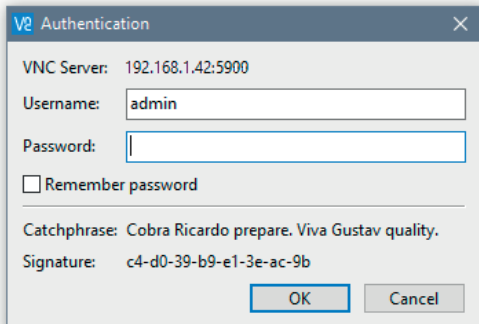
Username:   
Password:   
Next

**ADDER®**  
THE IP KVM PEOPLE

- 6 The next configuration steps cannot be carried out from the local console. Using a computer connected remotely to the AdderLink ipeps+ module (either through a network or connected via a direct patch link to the AdderLink ipeps+ network port), run the VNC Viewer application.

*The VNC Viewer application is available as a free download from [www.realvnc.com](http://www.realvnc.com). It allows you to view and control the AdderLink ipeps+ and its host computer(s).*

- 7 Use the network details entered earlier to guide the VNC Viewer to the AdderLink ipeps+ module. Once a connection is made, you should be presented with the login dialog:

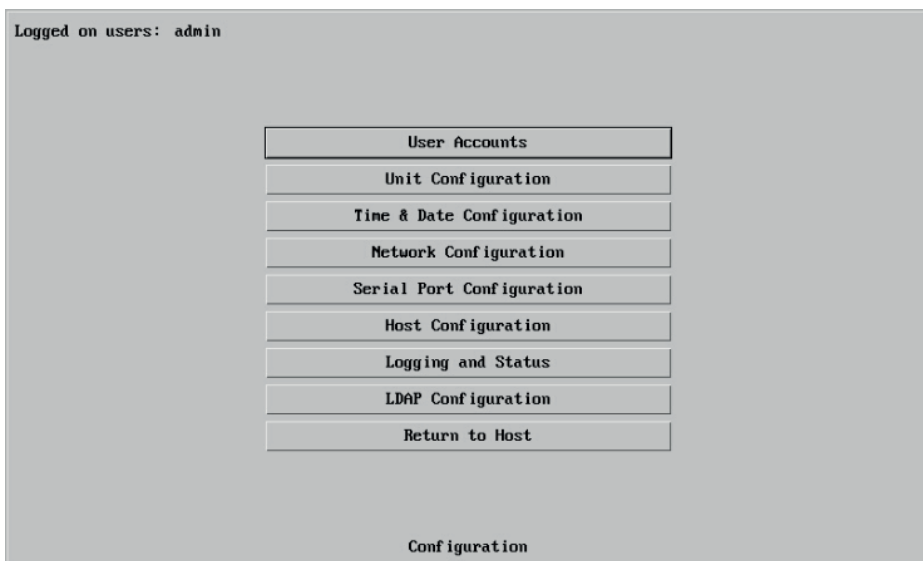


VNC Authentication dialog box showing the following fields and options:

- VNC Server: 192.168.1.42:5900
- Username: admin
- Password: (empty field)
- ☐ Remember password
- Catchphrase: Cobra Ricardo prepare. Viva Gustav quality.
- Signature: c4-d0-39-b9-e1-3e-ac-9b
- Buttons: OK, Cancel

- 8 Enter the admin password. If login is successful you should be presented with the VNC Viewer window with a menu bar at the top. Click the Configure button on the right side of the menu bar.

The main configuration menu should be displayed:



Main configuration menu showing the following options:

- User Accounts
- Unit Configuration
- Time & Date Configuration
- Network Configuration
- Serial Port Configuration
- Host Configuration
- Logging and Status
- LDAP Configuration
- Return to Host

Configuration

- 9 You can now complete the initial configuration. Common tasks include:

- Setting up **User Accounts** - see page 32.
- Completing the **Unit Configuration** (this page offers some of the options available in the console menu's General page, plus many others) - see page 34.
- Adjusting the **Time and Date Configuration** manually or nominating an NTP server to automate the time keeping duties - see page 40.
- Completing the **Network Configuration**, including the set up of IP Access Controls - see page 41.
- Setting up the **Host Configuration** if multiple hosts are connected via a KVM switch - see page 44.

**WARNING:** The configuration wizard must be completed to ensure the default IP address is set correctly. If the wizard is interrupted (ie power cycling or reset), navigate to the [Network page](#) of the configuration menu and simply select Save.

The various configuration pages are covered within Appendix 2:

- [User Accounts](#)
  - [Menu Bar \(Gui Edit Configuration\)](#)
- [Unit Configuration](#)
  - [EDID Configuration](#)
  - [Console Configuration](#)
  - [Advanced Unit Configuration](#)
- [Time & Date Configuration](#)
- [Network Configuration](#)
  - [IP Access Control](#)
- [Serial Port Configuration](#)
- [Host Configuration](#)
- [Logging and Status](#)
- [LDAP Configuration](#)

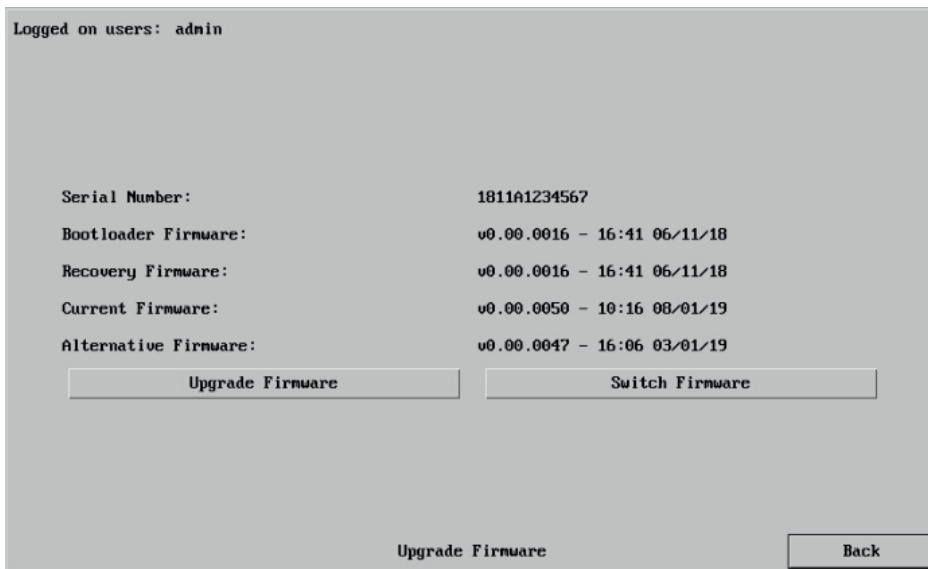


## FIRMWARE UPGRADE

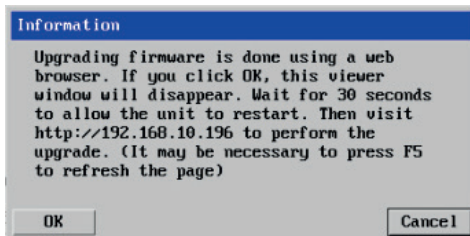
The firmware within the AdderLink ipeps+ module is fully upgradeable using update files issued by Adder.

### To perform a firmware upgrade

- 1 Download the required upgrade file from Adder, which will be of the form: `IPEPSPLUS_V0.00.0050.bin`.
- 2 Use the VNC viewer to make a remote connection (as the admin user) to the AdderLink ipeps+ unit and click the Configure button in the top right corner. See page 17.
- 3 Click the *Advanced Unit Configuration* option. See page 37.
- 4 Click the *Upgrade Firmware* button on the lower left side of the page to display the following page:



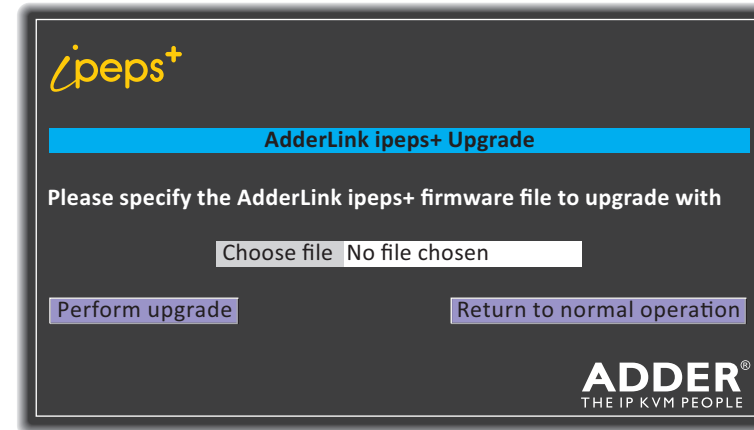
- 5 Click the *Upgrade Firmware* button to display the following dialog:



Note the IP address given.  
In this example:  
`http://192.168.10.196`

- 6 Note the IP address shown in the dialogue box and click OK.

- 7 The unit is now ready to accept the upgrade files. Open your browser and log into the AdderLink ipeps+ using the IP address that was confirmed in the dialog. Once connected, the unit will display the following screen:



- 8 Click the *Choose file* button and locate the .bin upgrade file that you downloaded earlier.
- 9 Click the *Perform Upgrade* button. The upgrade will take place and its progress will be shown on screen.

*Note: If the upgrade fails, then revert the URL back to `http://192.168.10.196` for normal operation.*

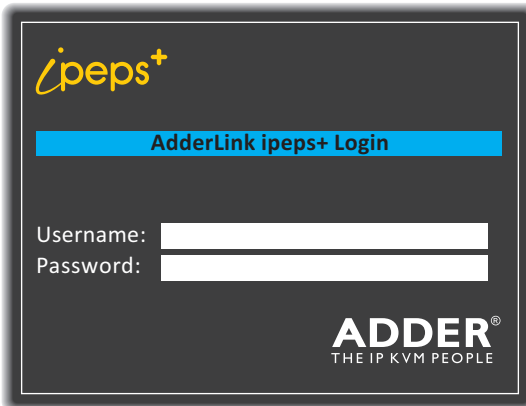
## CONNECTING WITH THE HOST COMPUTER(S)

The AdderLink ipeps+ module allows up to eight concurrent users to remotely connect with a host computer. In addition a locally connected console user can also make connections to the host. If an optional KVM switch is attached, a choice of multiple host computers becomes possible, although only one host may be selected at any one time.

### Local connections

#### To locally connect with a host

- 1 Move the mouse connected to the AdderLink ipeps+ module to display the login dialog (if already logged in, enter CTRL + ALT + C to display the dialog):

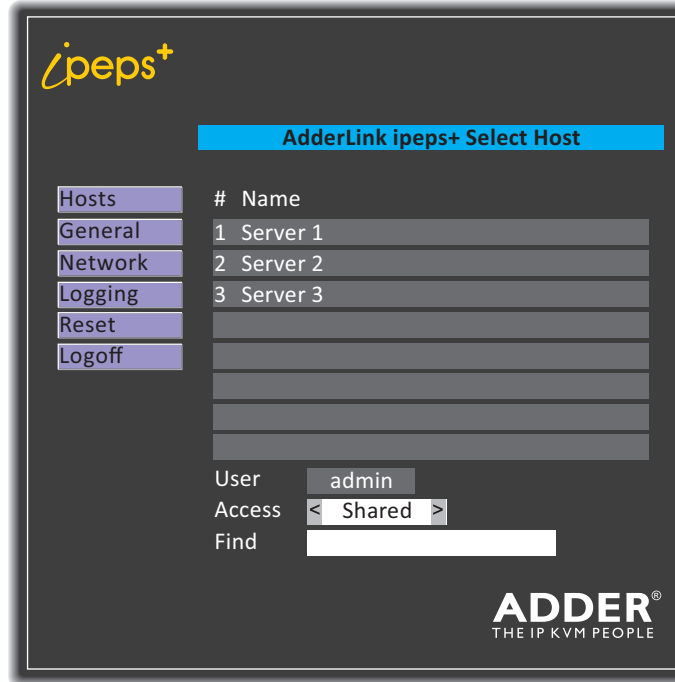


The login dialog features the ipeps+ logo at the top left and the ADDER logo at the bottom right. A blue header bar contains the text "AdderLink ipeps+ Login". Below this, there are two input fields: "Username:" and "Password:". The ADDER logo is accompanied by the tagline "THE IP KVM PEOPLE".

*Note: The default hotkeys (CTRL + ALT) can be changed within the General page if required.*

- 2 Enter the username and password and press the Enter key. The default username is **admin**, while the **password** is initially left blank.

- 3 The Hosts page will be displayed:



The "Select Host" dialog has a blue header bar with the text "AdderLink ipeps+ Select Host". On the left, there is a vertical menu with options: "Hosts", "General", "Network", "Logging", "Reset", and "Logoff". The "Hosts" option is currently selected. The main area displays a table of available hosts:

#	Name
1	Server 1
2	Server 2
3	Server 3

Below the table, there are three fields: "User" with the value "admin", "Access" with a dropdown menu showing "< Shared >", and "Find" with an empty text input field. The ADDER logo and tagline "THE IP KVM PEOPLE" are at the bottom right.

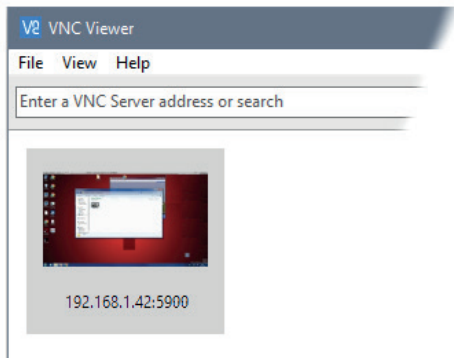
- 4 Click on the required host computer name to connect with it.
  - Optionally change the Access method between the Shared (your connection will be viewable by other users) and Private (all other users are locked out) settings.
  - If necessary, use the Find option to locate a particular server name.
- 5 At any time, enter **CTRL + ALT + C** to re-display the AdderLink ipeps+ dialog.

## Remote connections

The VNC Viewer application is available as a free download from [www.realvnc.com](http://www.realvnc.com). It gives you the ability to view and control the AdderLink ipeps+ and its host computer(s).

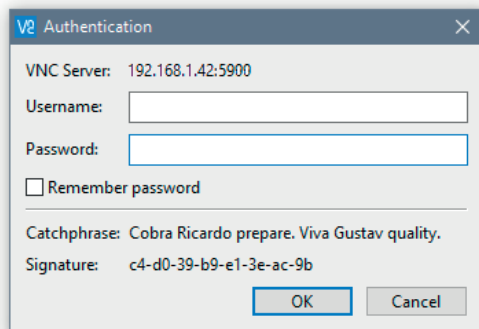
### To remotely connect with a host

1 Install and run the VNC Viewer application. The connection dialog will be displayed:



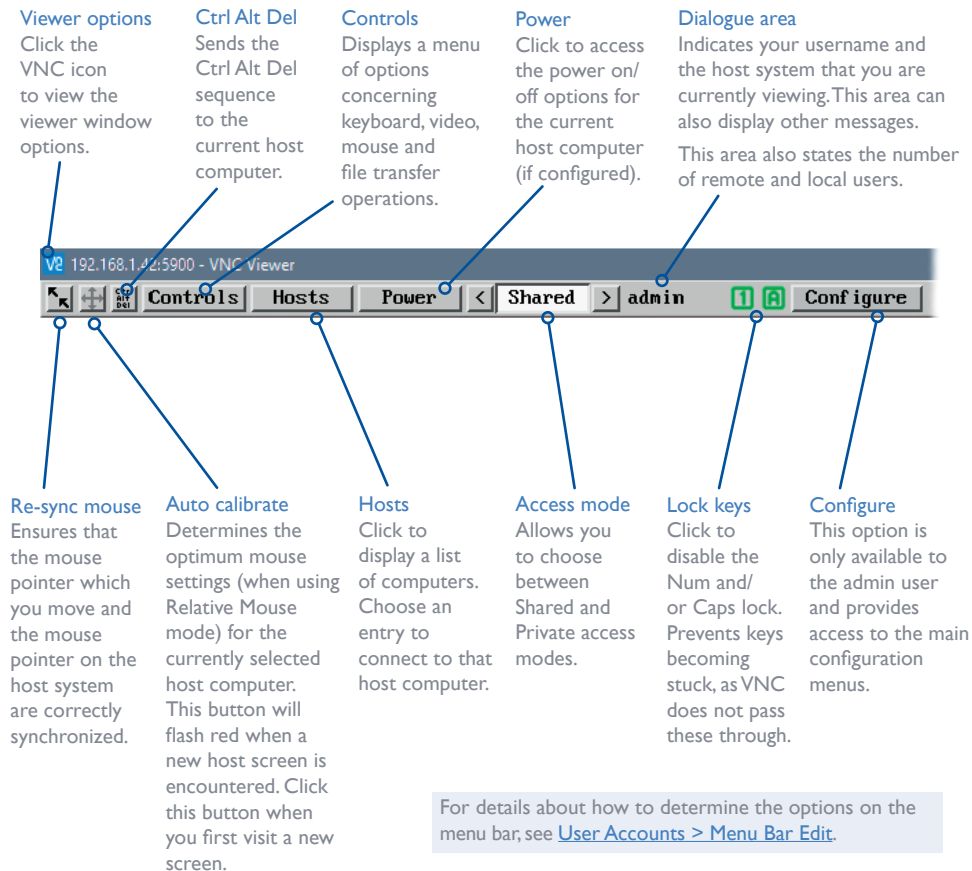
2 Enter the network address into the search bar and press Enter. The VNC Viewer will attempt to make a connection to the AdderLink ipeps+ module.

Once a connection is made, you should be presented with the login dialog:



3 Enter your username and password and click OK.

4 If a successful connection is made a new window will be opened with a VNC menu bar along the top edge:



*Note: The VNC Viewer Idle Timeout option is set to zero by default, ie, it will not automatically disconnect.*

## Auto calibrate

Auto calibrate will calibrate the mouse only if relative mouse mode is selected.

This detects the mouse motion and will report back that the mouse has been calibrated correctly depending upon the operating system.


See the notes on [Advanced mouse configuration](#) for more details.

Once this has been done, providing you use the 'Hosts' button to switch between host computers, the video settings for each machine will be re-used.

## Re-synchronize mouse

If you find that your local mouse pointer and that of the host are not correctly synchronized, use this feature to re-align their movements. This operation is also selectable from the Controls menu.

### To re-synchronize the mouse

- 1 Use the Hosts button to select the required computer.
- 2 Click the  button and then click OK in the subsequent pop-up message.

*Note: If you find that this doesn't work, you may need to perform a mouse calibration again.*

## Access mode - shared/private

Up to eight remote users can be simultaneously logged-in and all will view the same host. If you need to perform a sensitive task that should not be viewed by other users, you can change the access mode to Private. This action prevents other users connecting at the same time.

### To change the access mode

- 1 Click one of the arrow buttons adjacent to the Shared/Private indicator.



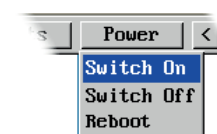
## Power switching

When configured (and where you have access rights) this option allows you to control the mains power input to the currently selected host computer.

*Note: This option is generally used to power cycle remote systems that have failed to respond. Before switching a system off, ensure that all attempts have first been made to power it down through normal means.*

### To switch a system on or off

- 1 Use the Hosts button to select the required computer.
- 2 Click the Power button and then select the Switch on or Switch off option, as appropriate.



## Controls

When clicked, this button reveals a menu of options concerned with keyboard, video and mouse operation.

### Single Mouse Mode

This mode is for fast network connections where the cursor response is sufficient to provide instant visual feedback on the remote screen. When enabled, the cursor is 'captured' within the viewer window until you use the 'escape' hot keys.

To quit from single mouse mode, press F8 and then P. Alternatively, enable and use the mouse button escape sequences - see Advanced unit configuration for details.

The single mouse mode does not require calibration.

### Resync Mouse

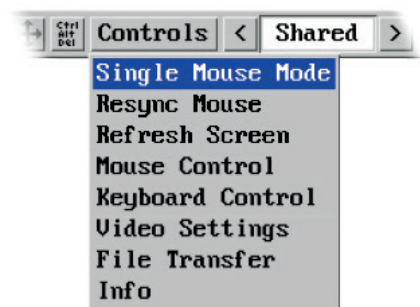
This option has the same effect as the  button on the menu bar and re-synchronizes the local and remote mouse pointers.

### Refresh Screen

This option refreshes the whole screen image to remove any artefacts from moved screen items. This is useful when using very low refresh rates on slow speed communication links.

#### See also

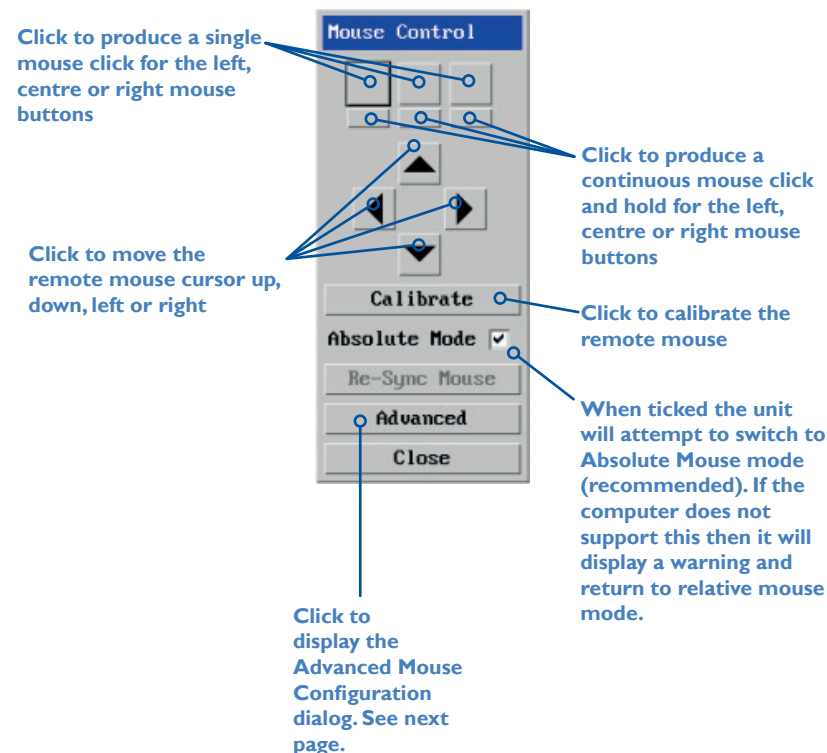
Keyboard Control	see page 21
Video Settings	see page 21
File Transfer	see page 22
Info	see page 20



## Mouse Control

This option displays a mouse control dialog and is useful when the remote cursor is failing to respond correctly to your mouse movements, even after using the Resync mouse option.

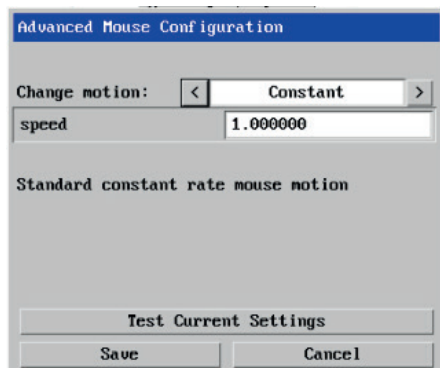
The mouse control dialog allows you to control the remote mouse cursor using a selection of buttons that you click with your local mouse.



## Advanced mouse configuration

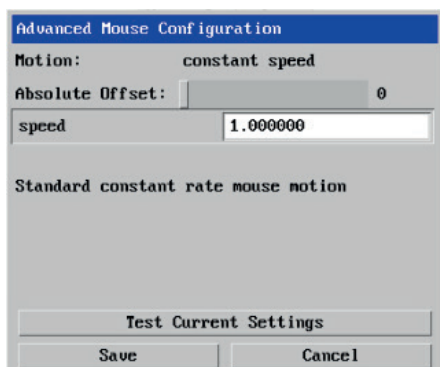
This dialog (accessible via the Mouse Control popup) allows the mouse acceleration to be configured according to the operating system in use and also permits manual fine tuning for situations where problems are encountered with the Calibrate function.

For best results, choose the appropriate *Change motion*: entry to match the host in use.



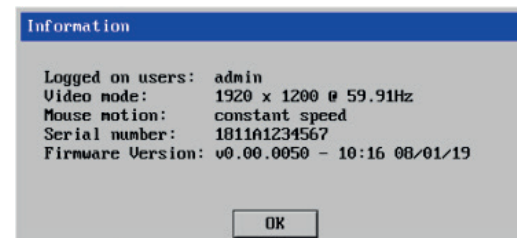
The available Change Motion schemes are: *Constant*, *Windows 7/8/10*, *Solaris*, *Solaris 9* and *Mac OSX*.

When the *Absolute Mode* option is ticked in the main [Mouse Control](#) menu, this dialog allows you to adjust the *Absolute Offset* scale:



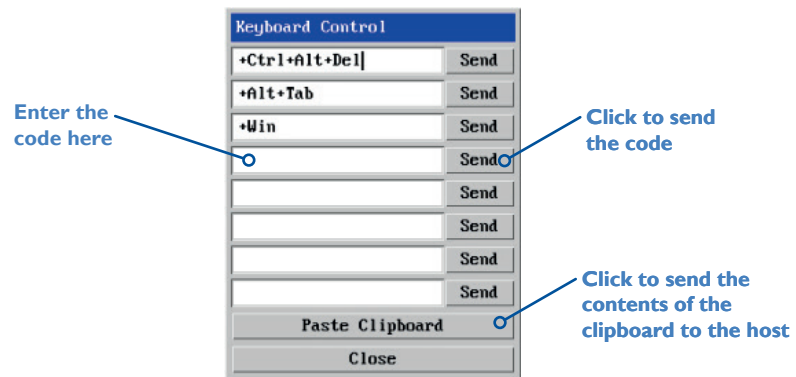
## Info

When selected, this option displays an information dialog showing the current logged on users, the current host, its video mode and its mouse motion details.



## Keyboard Control

This option displays a keyboard control dialog and is useful for sending keyboard combinations (to the host) that are needed regularly or that are trapped by the AdderLink ipeps+ module.



### When entering codes:

- + means press down the key that follows
- means release the key that follows
- +– means press down and release the key that follows
- \* means wait 250ms (note: if a number immediately follows the asterisk, then the delay will equal the number, in milliseconds)

It is automatically assumed that all keys specified will be released at the end, so there is need to specify -Ctrl or -Alt if these keys are to be released together.

### Examples:

'Ctrl + Alt I2' would be expressed as: +Ctrl+ Alt+ I–I+2

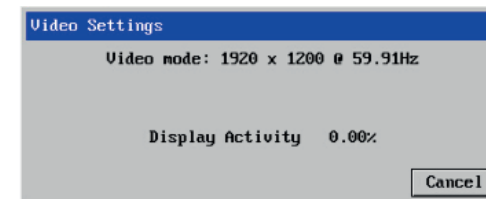
+N means press the 'N' key

+Scroll means press the Scroll lock key

+Space means press the space key

## Video settings

This dialog shows the current video mode and display activity.





## File Transfer

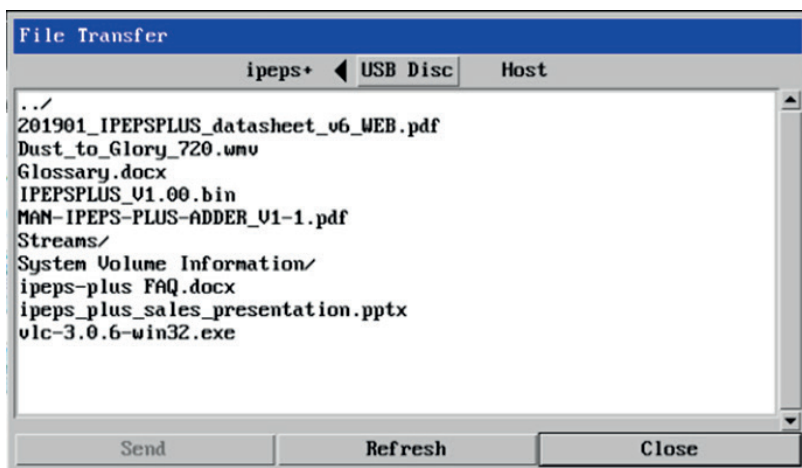
The file transfer function requires a USB disc drive to be attached to one of the USB ports of the AdderLink ipeps+ module. The maximum size of a file that can be transferred is limited only by the size of this disc.

File transfer works in two modes:

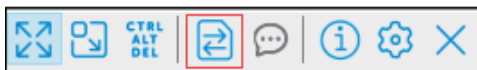
- In the first mode, files can be transferred from the USB disc to a VNC viewer, and vice versa.
- In the second mode, the disc appears as a remote device connected to the host.

### Transferring files to the host

- 1 Before starting ensure that the Enable File Transfer option is checked within the Advanced Unit Configuration dialog - see page 37.
- 2 To make files available to the host, they must be copied from the VNC Viewer to the USB disc and then from there to the host.
- 3 Bring up the file transfer menu (Controls->File Transfer) and ensure that the 'USB Disc' indicator (at the top of the dialog) points to ipeps+. This will enable the file transfer function in the viewer.

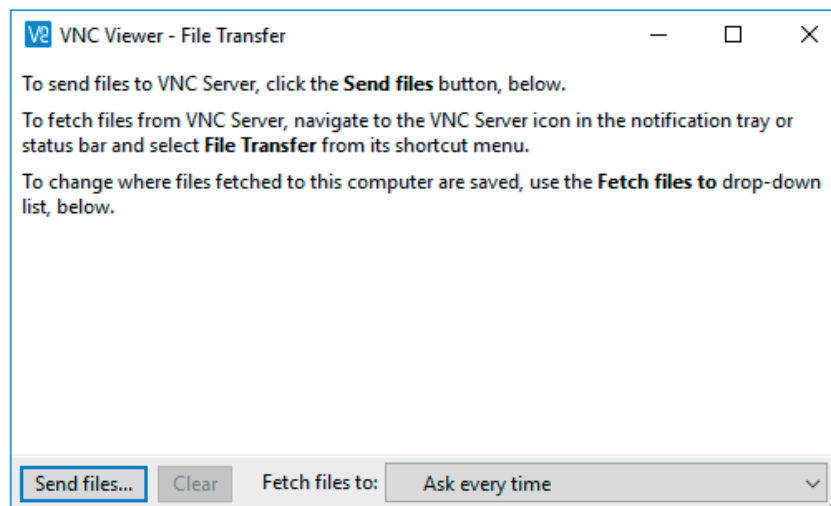


- 4 Files can now be copied to the disc by selecting 'Transfer Files' from the F8 menu or clicking on the equivalent icon in the VNC Viewer toolbar (accessed from the top of the screen):



The File Transfer dialog refers to 'VNC Server'; this means the AdderLink ipeps+ module.

- 5 Click on 'Send files...' and select the files to be sent. You can initiate multiple transfers to occur simultaneously.



A progress dialog is displayed during the file transfer. Note that the OK button just exits the dialog, the file transfer will continue to completion.

- 6 Once the transfer is complete, click on the 'USB Disc' indicator to connect the disc to the host. This may take some time (during which the arrow will flash) as buffer data may still need to be written to the disc. The disc is now connected to the host and the files can be read in the usual way.

**WARNING:** While transfers are in progress, avoid clicking on the 'USB Disc' indicator. A warning will be displayed and if you continue the transfer will be aborted; this includes any transfers initiated by other users.

### Transferring files from the host

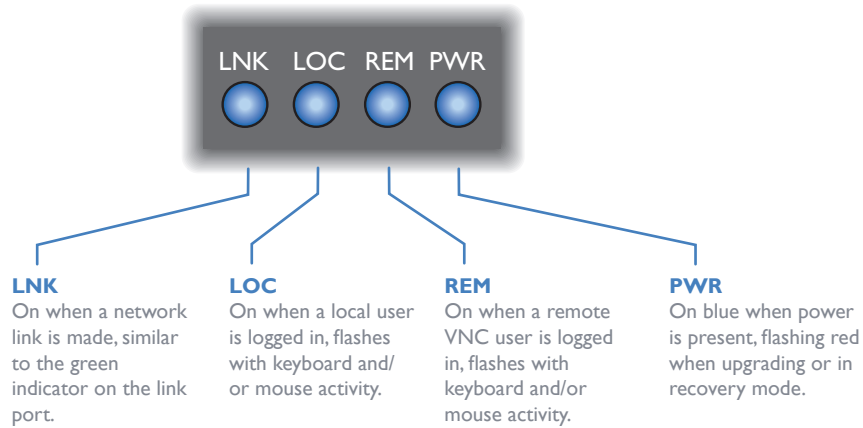
- 1 Before starting ensure that file transfer is enabled (see above).
- 2 To copy a file from the host, it must be copied in two stages; firstly to the attached USB disc and secondly from the disc to the VNC viewer.
- 3 Bring up the file transfer menu (Controls->File Transfer) and ensure that the 'USB Disc' indicator (at the top of the dialog) points to host. Copy the files to the USB disc in the usual way, and make sure that it can be safely removed.
- 4 Click on the 'USB Disc' indicator to connect the disc to the 'ipeps+'. The files should appear in the window.
- 5 Select the files to be transferred and click 'Send'. A 'VNC Viewer - File Transfer' dialog will indicate transfer progress.
- 6 If you select the Clear button, the log reverts to the default message, as per the dialog shown above. Please ignore the fetch files message, which relate to a software version of VNC Server, rather than one on an AdderLink ipeps+ module.
- 7 Files will either be stored in the pre-selected folder, or the user may choose to be prompted for the folder each time.

## INDICATORS

The AdderLink ipeps+ module contains various indicators to provide you with status information.

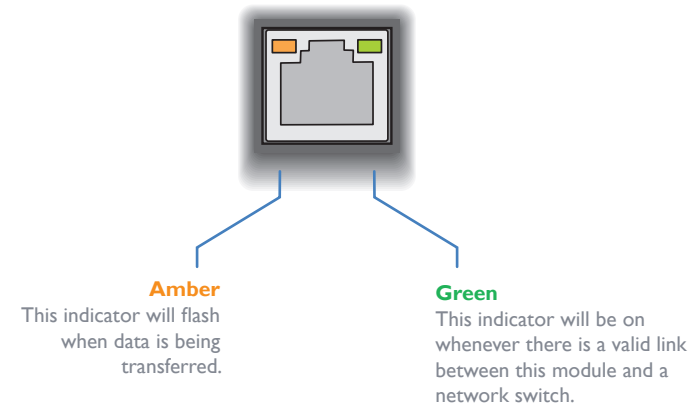
### Front panel status indicators

The status indicators on the front panel provide important feedback on current operation:



### Green and amber status indicators

The indicators on the rear panel link port provide link status information:



# Further information



This chapter contains a variety of information, including the following:

- Getting assistance - see right
- [Appendix 1](#) - Local console menus
- [Appendix 2](#) - Remote configuration menus (via VNC®)
- [Appendix 3](#) - Networking issues
- [Appendix 4](#) - Security considerations
- [Appendix 5](#) - Product compatibility
- [Appendix 6](#) - Hotkey sequences
- [Appendix 7](#) - Open source licenses

## GETTING ASSISTANCE

If you are still experiencing problems after checking the information contained within this guide, then please refer to the Support section of our website:

[www.adder.com](http://www.adder.com)

INSTALLATION

CONFIGURATION

OPERATION

FURTHER  
INFORMATION

INDEX

## APPENDIX I - LOCAL CONSOLE MENUS

These menus are accessible using the locally connected console keyboard, mouse and video monitor. Using them you can begin basic configuration steps and/or switch between different host computers, when an optional KVM switch is used.

### To display the local console menus

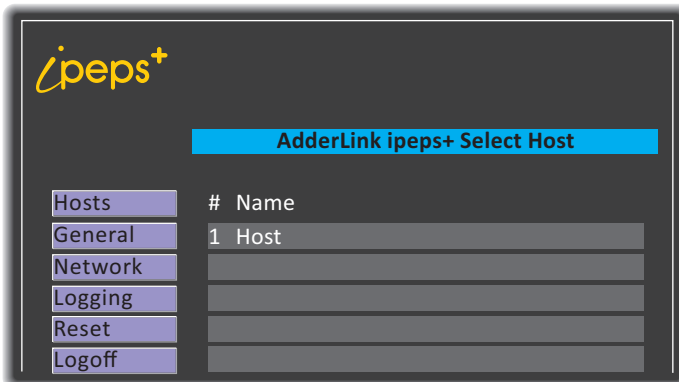
- 1 Move the mouse connected to the AdderLink ipeps+ module to display the login dialog (if already logged in, enter CTRL + ALT + C to display the dialog):



The login screen features the ipeps+ logo in the top left and the ADDER logo with the tagline 'THE IP KVM PEOPLE' in the bottom right. A blue header bar reads 'AdderLink ipeps+ Login'. Below this, there are two input fields: 'Username:' and 'Password:'. The password field is currently blank.

*Note: The default hotkeys (CTRL + ALT) can be changed within the General page if required.*

- 2 Enter the username and password and press the Enter key. The default username is **admin**, while the **password** is initially left blank.
- 3 The Hosts page of the configuration menu will be displayed:



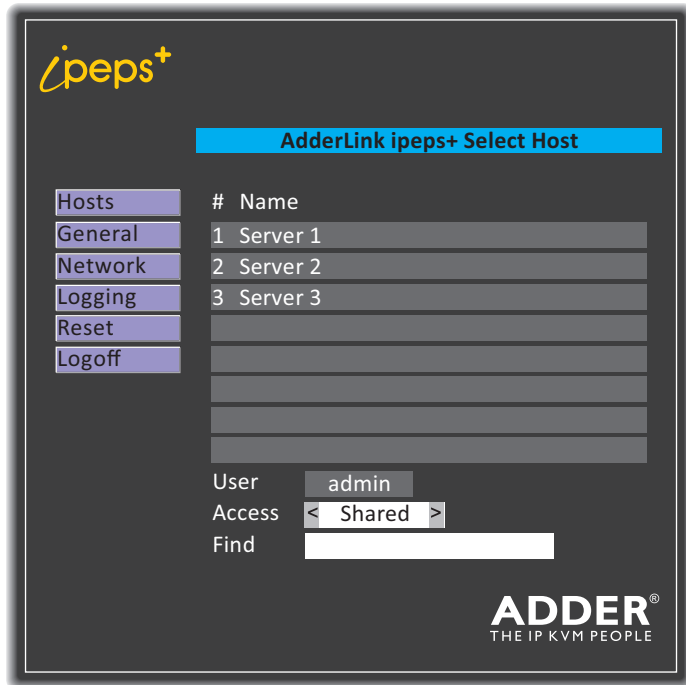
The configuration menu screen has a blue header bar reading 'AdderLink ipeps+ Select Host'. On the left, there is a vertical list of menu items: Hosts, General, Network, Logging, Reset, and Logoff. The 'Hosts' item is currently selected. To the right of this list, there is a table with two columns: '#' and 'Name'. The table contains one row with the value '1' in the '#' column and 'Host' in the 'Name' column.

#	Name
1	Host

- 4 During the initial configuration, the Hosts page will be empty.
- 5 Click any of the page buttons to proceed. Details about each page are given on the following pages:
  - [Hosts page](#) see page 26
  - [General page](#) see page 27
  - [Network page](#) see page 28
  - [Logging \(Diagnostics\) page](#) see page 29
  - [Reset page](#) see page 30

## Hosts page

This page allows you to quickly access the host computer(s) connected to the AdderLink ipeps+ module via an optional KVM switch:



### To choose a host computer from the local console

- 1 Move the mouse to display the ipeps+ dialog.
- 2 Click on the required host computer name to connect with it.
  - Optionally change the Access method between the Shared (your connection will be viewable by other users) and Private (all other users are locked out) settings.
  - If necessary, use the Find option to locate a particular server name.

### To add host computers to the list

Host computers are added to the list within the Host configuration page, which is accessed via the VNC Viewer application and a remote connection. See [Host Configuration](#).

### To get here

- 1 Move the mouse connected to the AdderLink ipeps+ module to display the login dialog (if already logged in, enter CTRL + ALT + C to display the dialog).
- 2 Enter the username\* and password\* and press the Enter key.
- 3 Click the 'Hosts' button located on the left hand side.

\* The default username is **admin**, while the **password** is initially left blank.

## General page

This page contains various important base settings:

**AdderLink ipeps+ Unit Config**

Hosts	Serial No.	1811A1234567
General	Firmware	v1.00 - 15:58 14/02/19
Network	Keybd Layout	< UK >
Logging	Admin Passwd	
Reset	Unit Name	
Logoff	Hot Keys	< Ctrl+Alt >
	Screensaver	< 10 mins >
	Time	< 21 > < 17 > < 04 >
	Date	< 14 > < Feb > < 2019 >
	Encryption	< Prefer Off >

**Save**

**ADDER**  
THE IP KVM PEOPLE

*Note: When you make any changes to items on this page, remember to click the **Save** button to fix them.*

### To get here

- 1 Move the mouse connected to the AdderLink ipeps+ module to display the login dialog (if already logged in, enter CTRL + ALT + C to display the dialog).
- 2 Enter the username\* and password\* and press the Enter key.
- 3 Click the 'General' button located on the left hand side.

\* The default username is **admin**, while the **password** is initially left blank.

### Keybd Layout

Determines the language layout used for the console keyboard. Options include: UK, US,

### Admin Passwd

Allows you to set a new admin password. Passwords can be up to 16 characters in length. Passwords must be at least 8 characters, including at least 1 letter, 1 number and a special character.

### Unit Name

Allows you to set an identification name for this AdderLink ipeps module, which is declared to VNC viewers making contact.

### Hot Keys

Determines the hot keys that are used by the console keyboard to raise the configuration menu.

### Screensaver

Determines the idle period that should elapse before a screensaver is invoked on the console video monitor. *Note: The user will need to log back in to continue.*

### Time and Date

Determines the time and date used by the AdderLink ipeps+ module.

### Encryption

Four options are available:

- *Always On* – set encryption at 128 bit,
- *Prefer Off* – request encryption off at the server, but will accept on or off,
- *Prefer On* – request encryption on at the server, but will accept on or off,
- *Maximum* – set encryption at 256 bit.

The one to choose depends on the specific details of your installation. The use of encryption imposes a slight performance overhead of roughly 10% but is highly secure against third party intrusion.

## Network page

This page contains various key network settings. See also [Appendix 3 - Networking issues](#) for useful configuration advice.

AdderLink ipeps+ Network Config		
Hosts	Mac Address	00:0F:58:04:91:2F
General	UseDHCP	< No >
Network	IP Address	192.168.1.42
Logging	Net Mask	255.255.255.0
Reset	Gateway	0.0.0.0
Logoff	DNS Server	8.8.8.8
	VNC Port	5900
	HTTP Port	80

Clear IP Access Control Save

**ADDER**  
THE IP KVM PEOPLE

*Note: When you make any changes to items on this page, remember to click the **Save** button to fix them.*

### To get here

- 1 Move the mouse connected to the AdderLink ipeps+ module to display the login dialog (if already logged in, enter CTRL + ALT + C to display the dialog).
- 2 Enter the username\* and password\* and press the Enter key.
- 3 Click the 'Network' button located on the left hand side.

\* The default username is **admin**, while the **password** is initially left blank.

### MAC address

Media Access Control address – this is the unique and unchangeable code that was hard coded within the module when it was built. It consists of six 2-digit hexadecimal (base 16) numbers separated by colons. A section of the MAC address identifies the manufacturer, while the remainder is effectively the unique electronic serial number of your particular unit.

### Use DHCP

Determines whether a DHCP (Dynamic Host Configuration Protocol) server should be consulted on the connected network to automatically set an appropriate IP Address, Net Mask and Gateway.

### IP Address

If the *Use DHCP* option is set to No, use this option to set an IP address for the AdderLink ipeps+ module which is appropriate for the network to which it is connected.

### Net Mask

If the *Use DHCP* option is set to No, use this option to set a subnet-mask for the AdderLink ipeps+ module which is appropriate for the network to which it is connected.

### Gateway

If the *Use DHCP* option is set to No, use this option to set a gateway address for a network router which gives access to another network, to be used whenever a required address lies outside the current network.

### DNS Server

If the *Use DHCP* option is set to No, enter a valid IP address here for a Domain Name System server which is reachable through the connected network.

### VNC Port

This is the logical link through which communications with a remote VNC viewer will be channelled. The default setting is 5900 which is a widely recognized port number for use by VNC® software. However, in certain circumstances it may be advantageous to alter this number.

### HTTP Port

This is the logical link through which communications with a remote web browser will be channelled. The default setting of 80 is an established standard for web (HTTP – HyperText Transfer Protocol) traffic though this can be changed to suit your local network requirements.

### Clear IP Access Control

Using the admin account via the remote VNC connection it is possible to specify ranges of addresses which will or won't be granted access to the AdderLink ipeps+ module. However, it is possible to accidentally exclude all IP addresses, so this button (only on the local console connection) acts as a failsafe to remove all access control entries.



## Logging (Diagnostics) page

This page contains controls related to diagnostic activities.



ipeps+

AdderLink ipeps+ Diagnostics

Hosts

General

Network

Logging

Reset

Logoff

Syslog Server

Dump log to USB

Trigger

Remote Support

< 22 >

Enable

Save

ADDER®  
THE IP KVM PEOPLE

*Note: When you make any changes to items on this page, remember to click the **Save** button to fix them.*

### Syslog Server

Enter the IP address of a valid syslog server where you wish to record log data generated by the AdderLink ipeps+ unit.

### Dump log to USB

Insert a memory stick into one of the USB ports on the AdderLink ipeps+ unit and click the Trigger button to begin saving the current diagnostic log. The supported storage formats are 'FAT' and 'EXT4'.

### Remote Support

The AdderLink ipeps+ unit has a remote support feature that allows technical support to connect should the need arise. It works by establishing a secure SSL connection with a managed secure server hosted on the internet. Using a reverse tunnel, technical support can connect to the unit via the secure server. Each support representative has their own unique SSL keys for full traceability when making a remote connection.

Adder Technical Support will guide you through the enabling process and confirm whether the standard port number 22 needs to be changed.

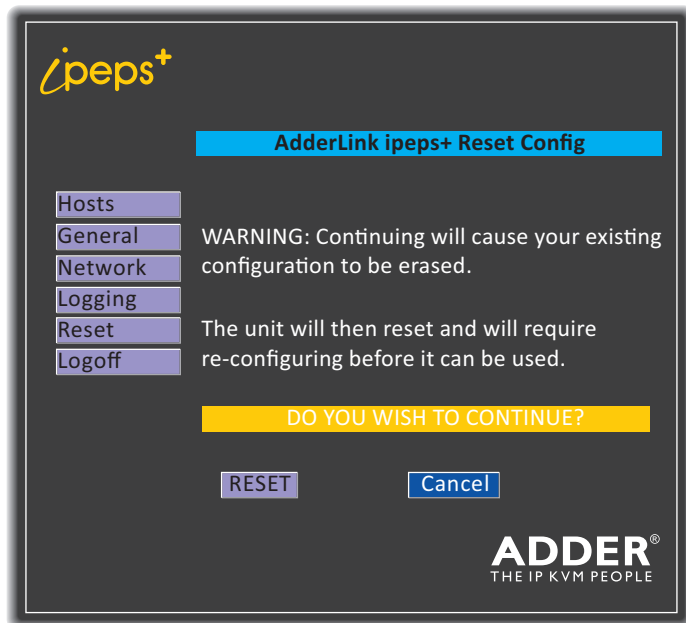
### To get here

- 1 Move the mouse connected to the AdderLink ipeps+ module to display the login dialog (if already logged in, enter CTRL + ALT + C to display the dialog).
- 2 Enter the username\* and password\* and press the Enter key.
- 3 Click the 'Logging' button located on the left hand side.

\* The default username is **admin**, while the **password** is initially left blank.

## Reset page

This page allows you to reset all configuration options:



### To get here

- 1 Move the mouse connected to the AdderLink ipeps+ module to display the login dialog (if already logged in, enter CTRL + ALT + C to display the dialog).
- 2 Enter the username\* and password\* and press the Enter key.
- 3 Click the 'Reset' button located on the left hand side.

\* The default username is **admin**, while the **password** is initially left blank.

### To reset the AdderLink ipeps+

**Warning:** Using this option will clear all configuration items and return the module to its default condition.

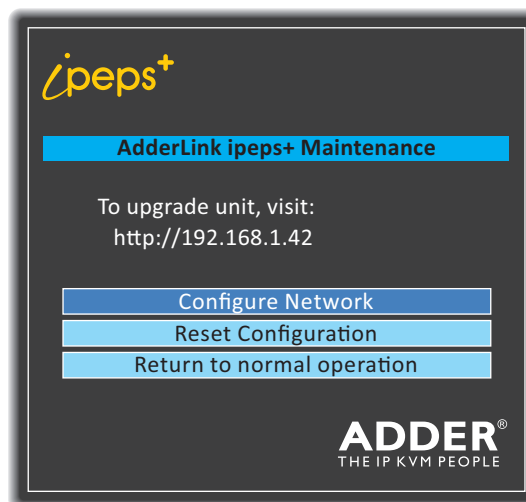
- 1 Near the foot of the page, click the RESET button.

The module will be returned to all of its factory settings and will perform a cold reboot.

### To reset the AdderLink ipeps+ using the front panel recover button

- 1 On the front panel, use a thin implement (such as a straightened out paper clip) to press the recessed button (located just below the ipeps+ logo) for around 12 seconds until the blue PWR indicator starts to flash. Once the button is released, the indicator will flash red to signify recovery mode is in progress.

The Maintenance page will be displayed:



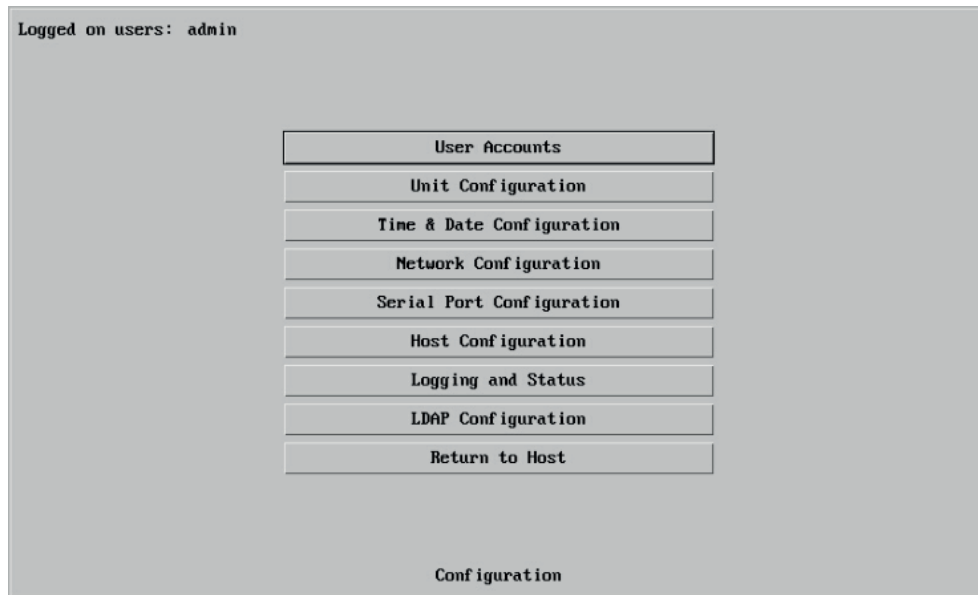
- 2 Click the Reset Configuration option.

The module will be returned to all of its factory settings and will perform a cold reboot.

*Note: When an AdderLink ipeps+ unit is put into recovery mode, if the Configure Network option is then used to change the IP address, this change will only apply whilst the unit remains in recovery mode. Once recovery mode is exited, the unit will revert to the previous IP address.*

## APPENDIX 2 - REMOTE CONFIGURATION MENUS (VIA VNC)

When connected remotely via VNC, with admin privileges, a Configure button is made available on the right side of the VNC menu bar. The resulting configuration menu provides access to all main settings of the AdderLink ipeps+ module:

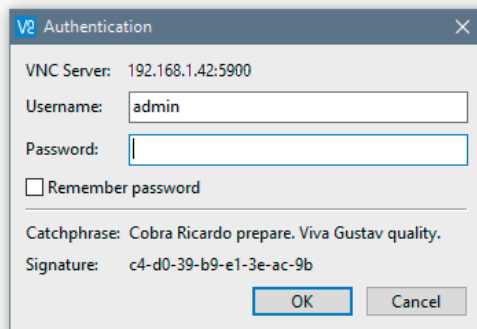


The various configuration pages are covered within this appendix:

- [User Accounts](#)
  - [Menu Bar \(Gui edit configuration\)](#)
- [Unit Configuration](#)
  - [EDID Configuration](#)
  - [Console Configuration](#)
  - [Advanced unit Configuration](#)
- [Time & Date Configuration](#)
- [Network Configuration](#)
  - [IP Access Control](#)
- [Serial Port Configuration](#)
- [Host Configuration](#)
- [Logging and Status](#)
- [LDAP Configuration](#)

### To view the main configuration menu

1 Using the VNC viewer application, log on as the 'admin' user.



2 Click the 'Configure' button in the top right corner. The main configuration menu will be displayed (shown above).

## User Accounts

There is one admin user account, which has full access to the configuration menu. Up to 15 users can be created by the admin user, each with their own password and access privileges.

Logged on users: admin

User Name	Password	Local	Remote	Power	Auto Logon	Menu Bar
admin		<input checked="" type="checkbox"/>	<input checked="" type="checkbox"/>	<input checked="" type="checkbox"/>	<input type="checkbox"/>	Edit
		<input type="checkbox"/>	<input type="checkbox"/>	<input type="checkbox"/>	<input type="checkbox"/>	Edit
		<input type="checkbox"/>	<input type="checkbox"/>	<input type="checkbox"/>	<input type="checkbox"/>	Edit
		<input type="checkbox"/>	<input type="checkbox"/>	<input type="checkbox"/>	<input type="checkbox"/>	Edit
		<input type="checkbox"/>	<input type="checkbox"/>	<input type="checkbox"/>	<input type="checkbox"/>	Edit
		<input type="checkbox"/>	<input type="checkbox"/>	<input type="checkbox"/>	<input type="checkbox"/>	Edit
		<input type="checkbox"/>	<input type="checkbox"/>	<input type="checkbox"/>	<input type="checkbox"/>	Edit
		<input type="checkbox"/>	<input type="checkbox"/>	<input type="checkbox"/>	<input type="checkbox"/>	Edit
		<input type="checkbox"/>	<input type="checkbox"/>	<input type="checkbox"/>	<input type="checkbox"/>	Edit
		<input type="checkbox"/>	<input type="checkbox"/>	<input type="checkbox"/>	<input type="checkbox"/>	Edit
		<input type="checkbox"/>	<input type="checkbox"/>	<input type="checkbox"/>	<input type="checkbox"/>	Edit
		<input type="checkbox"/>	<input type="checkbox"/>	<input type="checkbox"/>	<input type="checkbox"/>	Edit
		<input type="checkbox"/>	<input type="checkbox"/>	<input type="checkbox"/>	<input type="checkbox"/>	Edit
		<input type="checkbox"/>	<input type="checkbox"/>	<input type="checkbox"/>	<input type="checkbox"/>	Edit
		<input type="checkbox"/>	<input type="checkbox"/>	<input type="checkbox"/>	<input type="checkbox"/>	Edit

Save User Configuration Cancel

### To get here

- 1 Using VNC viewer, log on as the 'admin' user.
- 2 Click the 'Configure' button in the top right corner.
- 3 Click the 'User Accounts' option.

### User Name

All user names must consist of lower case characters, numbers and certain non-alphanumeric characters (e.g. '\_') only. No symbols or upper case characters are permissible. The user name can be between 1 and 32 characters in length but cannot contain foreign characters.

### Password

Each password can be up to 16 characters in length. Passwords must be at least 8 characters, including at least 1 letter, 1 number and a special character.

### Local

When ticked, the selected user can gain access via the local console connected directly to the AdderLink ipeps+ module.

### Remote

When ticked, the selected user can gain access to the AdderLink ipeps+ module using VNC Viewer via an IP network link.

### Power

When ticked, the selected user will be permitted to control the power input to host systems (requires optional power control switch unit(s) to be fitted).

### Auto Logon

This feature affects the local console connection only and, when ticked, allows the specified user to access the host computer without entering their credentials. By default this option is disabled.

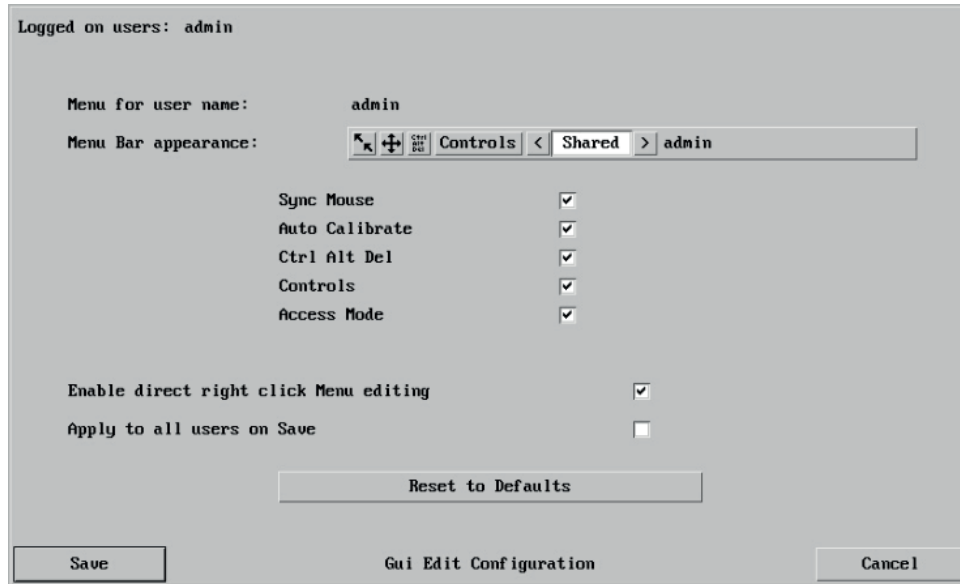
### Menu Bar

Optionally click to customize the menu bar for each user. See next page.

## Menu Bar Edit (Gui Edit Configuration)

If required, you can customize the menu bar of the viewer window to ensure that it contains only the necessary options.

The menu bar can be edited locally by each user or edited singly by the admin or alternatively, the admin can globally alter the menu bar for all users.

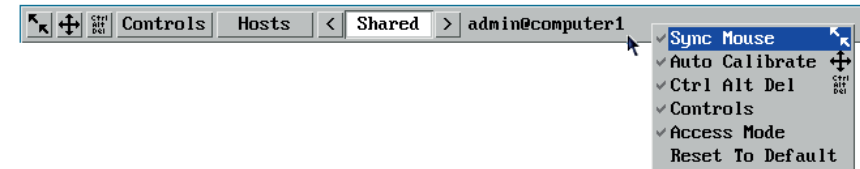


### To globally edit the menu bar via admin

- 1 Using VNC viewer, log on as the 'admin' user.
- 2 Click the 'Configure' button in the top right corner.
- 3 Click on User Configuration.
- 4 Click on the relevant Edit button.

### To edit the menu bar locally

- 1 Login remotely via VNC viewer and display the viewer window.
- 2 Place the mouse pointer on the menu bar and click the right mouse button. A popup will be displayed:



- 3 Click on any option within the popup to add it to or remove it from the menu bar.
- 4 When all changes have been made, click anywhere else within the viewer window.

Changes made in this way will affect the individual user only.

## Unit Configuration

This page provides access to a selection of both basic and advanced settings for the AdderLink ipeps+ module. Some of the settings displayed here are also accessible through the on-screen menu that is available to the local console.

Logged on users: admin

Serial Number:	1811A1234567
Firmware Version:	v0.00.0030 - 12:41 11/12/18
Server Preferred Encoding	< JPEG (High performance) >
Host Keyboard Layout	< UK >
Admin Password	<input type="password"/>
Unit Name	<input type="text"/>
New Connections Private	<input type="checkbox"/>
Menu Bar Toggle Hot Key	< None >
Display Menu Bar for New Connections	<input checked="" type="checkbox"/>
Encryption	< Prefer Off >
Number of simultaneous VNC Users	< 4 >
VNC Viewer Hot Key Sequence	< Ctrl+Alt >

[EDID Configuration](#)
[Console Configuration](#)
[Advanced Unit Configuration](#)

[Save](#)
[Unit Configuration](#)
[Cancel](#)

### Firmware Version

Indicates the version of the internal software within the AdderLink ipeps+ module flash memory.

### Server Preferred Encoding

Determines the preferred graphics encoding method to be used across the VNC connection. Options are: JPEG (High performance), Use Viewer Preference, raw, RRE, hextile, TRLE, ZRLE. *Note: If the Use Viewer Preference option is selected, the user may have to reset the unit (see Advanced Unit Configuration) when switching between different VNC Viewer Preferred Encoding property settings.*

### Host Keyboard Layout

Use the arrow buttons to match the keyboard layout expected by the host system. *Note: The chosen keyboard layout may be different from the keyboard layout being used by one or more remote users.*

### Admin Password

Optionally edit the password that will be used to gain administrator access to the AdderLink ipeps+ module.

### Unit Name

The name entered here will be displayed on the local menus and the remote VNC viewer/browser windows.

### To get here

- 1 Using VNC viewer, log on as the 'admin' user.
- 2 Click the 'Configure' button in the top right corner.
- 3 Click the 'Unit Configuration' option.

### New Connections Private

Allows you to determine whether new local or VNC connections should be set up as private (when ticked) or as shared (when unticked).

### Menu Bar Toggle Hot Key

Determines the function key that can be used to display/hide the menu bar within the VNC screen.

### Display Menu Bar for New Connections

If a menu bar hot key is set (see above), this tick box option becomes available and determines whether or not a menu bar is shown when each new connection occurs.

### Encryption

Four options are available: Always On, Always Maximum, Prefer Off or Prefer On. The one to choose depends on the specific details of your installation. The use of encryption imposes a slight performance overhead of roughly 10% but is highly secure against third party intrusion. Maximum selects 256 bit encryption. See page 27 for explanations of the options.

### Number of simultaneous VNC Users

Allows you to restrict the number of concurrent VNC sessions. The maximum number is 8 and the default is 4.

### VNC Viewer Hot Key Sequence

When using the VNC Viewer, you can use key press combinations to select host computers and also to display the host selection menu. This option allows you to choose which keys should be used to form the hotkeys that will precede a switching command. The default setting is CTRL + ALT, so as an example when you press the CTRL ALT and 2 keys, the viewer will change to the host with "Hotkey Host Number" 2 - see [Host configuration](#).

There are three additional buttons at the foot of the page:

- [EDID Configuration](#) - Details the timings for the various video modes supported by the host computer and also allows you to edit timings where necessary. It is not normally necessary to make any changes within this section.
- [Console Configuration](#) - Allows you to adjust settings which specifically affect users of the local console.
- [Advanced Unit Configuration](#) - Allows access to timings and calibration options which do not usually require attention.

## EDID Configuration

This page details the timings for the various video modes supported by the host computer. The Edit Preferred, Standard & DVT Timing page also allows you to edit timings where necessary. It is not normally necessary to make any changes within these pages.

Logged on users: admin

Use EDID from Local Monitor ☐

**Preferred Timing**

Preferred Mode 1920 x 1080 @ 60Hz 148.50 MHz

active	fp	sync	bp	polarity	active	fp	sync	bp	polarity		
Horizontal	1920	88	44	148	Pos	Vertical	1080	4	5	36	Pos

**Established Timing**

720 x 400 @ 70 Hz	<input checked="" type="checkbox"/>	640 x 480 @ 60 Hz	<input checked="" type="checkbox"/>	640 x 480 @ 67 Hz	<input checked="" type="checkbox"/>	640 x 480 @ 72 Hz	<input checked="" type="checkbox"/>
640 x 480 @ 75 Hz	<input checked="" type="checkbox"/>	800 x 600 @ 56 Hz	<input checked="" type="checkbox"/>	800 x 600 @ 60 Hz	<input checked="" type="checkbox"/>	800 x 600 @ 72 Hz	<input checked="" type="checkbox"/>
800 x 600 @ 75 Hz	<input checked="" type="checkbox"/>	832 x 624 @ 75 Hz	<input checked="" type="checkbox"/>	1024 x 768 @ 60 Hz	<input checked="" type="checkbox"/>	1024 x 768 @ 70 Hz	<input checked="" type="checkbox"/>
1024 x 768 @ 75 Hz	<input checked="" type="checkbox"/>	1280 x 1024 @ 75 Hz	<input checked="" type="checkbox"/>	1152 x 870 @ 75 Hz	<input checked="" type="checkbox"/>		

**Standard Timing**

1920 x 1080 @ 60Hz	1920 x 1200 @ 60Hz	800 x 600 @ 85Hz	1024 x 768 @ 85Hz
1152 x 864 @ 75Hz	1280 x 960 @ 60Hz	1280 x 1024 @ 85Hz	1600 x 1200 @ 60Hz
1152 x 864 @ 60Hz	1280 x 1024 @ 67Hz	640 x 480 @ 85Hz	

Support Default GTF ☒ HDMI ☒

Monitor Name

Coordinated Video Timing (CUT)

When checked, the local monitor's EDID is passed through to the host PC; the other controls on this dialog are then ignored. The other controls are used if either the checkbox is clear or no local monitor is connected.

Note: The HDMI checkbox is normally checked, however it should be cleared if the local monitor does not have a native HDMI connector.

This string is displayed as the monitor type when Display Settings are displayed on the host PC.

Logged on users: admin

**Preferred Timing Mode**

Resolution:  X  @  Hz

Pixel Clock:

Active Front Sync Back Polarity  
Porch Porch

Horizontal

Vertical

**Standard Timing Modes**

X  @  Hz

1920 x 1200 @ 60Hz  
800 x 600 @ 85Hz  
1024 x 768 @ 85Hz  
1152 x 864 @ 75Hz

**Coordinated Video Timing Modes**

X  @  Hz RB



## Console Configuration

This page allows you to adjust settings which specifically affect users of the local console.

Logged on users: admin

Local Hot Key Sequence	< Ctrl+Alt >
Screensaver Timeout	< 10 mins >
Notify Remote (VNC) Users of Other Logons	<input type="checkbox"/>
Notify Local User of Other Logons	<input type="checkbox"/>
Notification Text	ipeps+
Notification Foreground Colour	< Blue2 >
Notification Background Colour	< Grey1 >
Inter User Switching Time	< 2 secs >
Local Activity Monitor Time	< off >

Save Console Configuration Cancel

### Local Hot Key Sequence

Determines the hot keys used by the local console users to gain access to the AdderLink ipeps+ dialog.

### Screensaver Timeout

Determines the idle time period before a screensaver is displayed on an active console connection.

### Notify Remote (VNC) Users of Other Logons

When checked, remote (VNC) users will be shown a list of all logged-in users whenever there's a change.

### Notify Local User of Other Logons

When checked, the local user will be shown a list of all logged-in users whenever there's a change.

### Notification Text

Allows you to edit the text string (up to 30 characters) that will be shown in all notification popups.

### Notification Foreground Colour

Determines the foreground colour used for notification popups.

### Notification Background Colour

Determines the background colour used for notification popups.

### Inter User Switching Time

This setting helps to solve contention issues between allowing the local and remote users to take control of the mouse and keyboard connections. This determines the idle time (period of inactivity in seconds) after which control can be established by the other party. Options are: 2 secs (default), 5, 10, 30, 40, 50 or 60 secs.

### Local Activity Monitor Time

When enabled, the inactivity timeout information will be logged at the web location, <http://<addr>/ActivityMonitor>. Timeout thresholds are Off (default), 1, 2, 5, 10, 20 and 30 secs.

## Advanced Unit Configuration

Click this button to display advanced options that do not normally require alteration.

Logged on users: admin

Force VNC Protocol 3.3	<input type="checkbox"/>
Idle Timeout (minutes)	60
Session Sleep Timeout (minutes)	20
Protocol Timeout (seconds)	20
Background Refresh Rate	< Medium >
Mouse Latency Allowance (milliseconds)	0
Mouse Rate (milliseconds)	20
Single Mouse Mode Mouse Switch	< Disabled >
Use Quick Mouse Calibration	<input checked="" type="checkbox"/>
Use Absolute Mouse by default	<input checked="" type="checkbox"/>
Set viewer cursor to arrow	<input type="checkbox"/>
Behaviour for admin connections when limit reached	< Replace oldest connection >
Audio Volume	

Upgrade Firmware Remote Support Multi Head USB Reboot Unit

Save Advanced Unit Configuration Cancel

### Force VNC Protocol 3.3

**IMPORTANT:** Protocol 3.3 is a legacy version that does not offer any encryption. Hashed passwords are not supported with 3.3

### Idle Timeout

Determines the period of inactivity on a global connection before the user is logged out. The idle timeout period can be set to any time span, expressed in minutes.

### Session Sleep Timeout

Determines the period of inactivity before the viewer screen will blank and a message is displayed.

### Protocol Timeout

Sets the time period by which responses should have been received to outgoing data packets. If the stated period is exceeded, then a connection is considered lost and terminated.

### Background Refresh Rate

Use the arrow keys to alter the background refresh rate used to correct any screen changes missed in normal operation. The options are: Slow, Medium, Fast, Auto or Disabled. The Auto option automatically varies the refresh rate when multiple VNC sessions are active to provide a balance between the sessions.

*Note:* When a low connection speed is detected, the background refresh is automatically disabled, regardless of the settings of this option.

### Mouse Latency Allowance

This option (*used only for Relative Mouse mode*) is used during calibration to account for latency delays that may be caused as signals pass through a device.

During calibration, the AdderLink ipeps+ module waits for 40ms after each mouse movement before sampling the next. If a device adds a significant delay to the flow of data, the calibration process can be lengthened or may fail entirely. The value entered here is added to (or subtracted from) the default 40ms sampling time.

*Note:* You can enter negative values (down to -40) in order to speed up the calibration process when using fast KVM switches. Use this option with caution as it can adversely affect the calibration process.

### Mouse Rate

Defines the rate at which mouse movement data are transmitted to the system. The default option is 20ms, which equates to 50 mouse events per second. This is used to slow down the rate in exceptional circumstances but normally requires no adjustment.

### Single Mouse Mode Mouse Switch

Select the mouse button combination to exit from single mouse mode (when active).

### Use Quick Mouse Calibration

Invokes optimized calibration techniques that handle the majority of mouse types (*used only for Relative Mouse mode*).

### Use Absolute Mouse by default

When selected, absolute mouse positioning data will be used rather than relative values.

### Set viewer cursor to arrow

When checked, the viewer's mouse cursor will default to an arrow.

### Behaviour for admin connections when limit reached

Determines what should occur when the limit on VNC users is reached. Options are: *Replace oldest connection*, *Replace newest connection* and *Don't replace*.

### Audio Volume

Controls the volume of the short tone that is played to the local user to indicate when a remote connection is active.

## Upgrade Firmware

Allows you to upgrade the firmware of the AdderLink ipeps+ module. See page 15.

## Remote Support

The AdderLink ipeps+ unit has a remote support feature which allows technical support to connect, should the need arise. It works by establishing a secure SSL connection with a managed secure server hosted on the internet. Using a reverse tunnel, technical support can connect to the unit via the secure server. Each support representative has their own unique SSL keys for full traceability when making a remote connection.

Adder Technical Support will guide you through the enabling process and confirm whether the standard port number 22 needs to be changed.

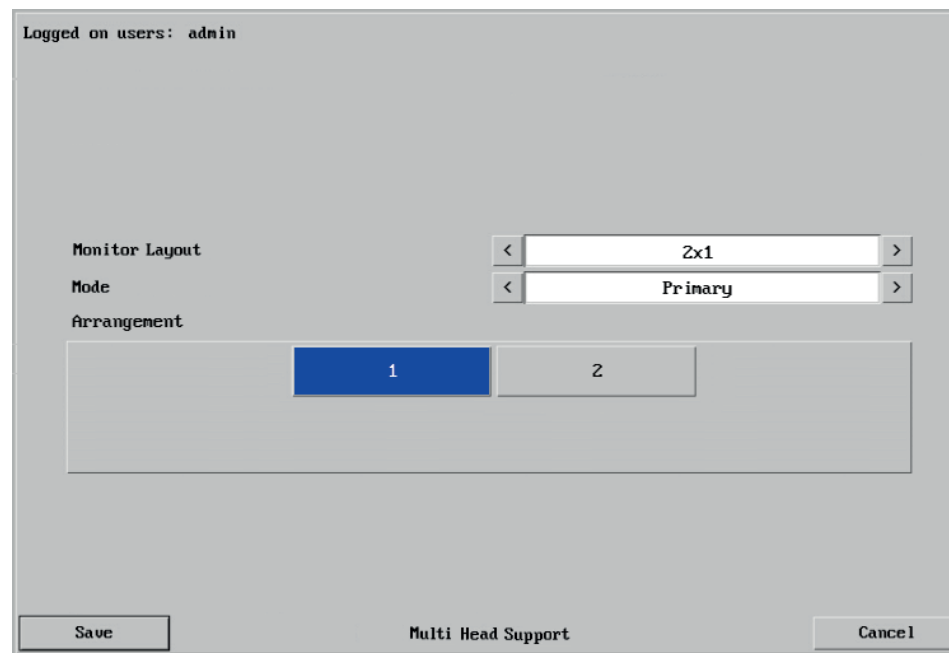
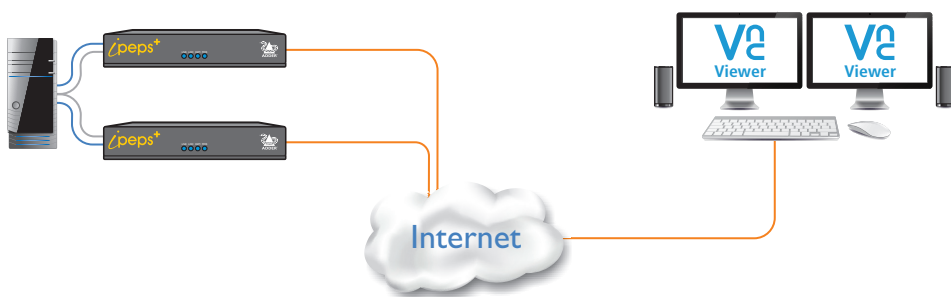
## Multi Head

When clicked the Multi Head Support dialog (shown right) is displayed. This allows you to configure connection to a multi-head computer that has up to 4 displays. A separate ipeps+ module is used to connect to each head, each accessed by a separate VNC session. All ipeps+ modules are required to have a video and USB connection to the host computer.

The standard VNC Viewer application, downloaded from [www.realvnc.com](http://www.realvnc.com), will suffice.

*Note: Multi-head operation relies upon the host computer using Absolute mouse mode.*

The Multi Head Support dialog is used to specify that multi-head mode is being used, as well as confirming the monitor layout and which monitor within the layout this ipeps+ module is connected to:



### Monitor Layout

Layout are specified in the format HxV, where H is number of horizontal displays and V are the vertical number. The list of choices is: 1x1 (default single head), 2x1, 4x1, 2x2, 1x2.

### Mode

The Mode is either Primary or Secondary. Only one ipeps+ module in the layout may be designated as Primary. If using the local console, KM USB connections should only be made to the primary module. KM connections to secondary modules will be ignored.

### Arrangement

The graphic shows the chosen monitor layout. You should select the position of the ipeps+ module within the layout.

*Note: There are no communications between ipeps+ modules, so it is up to you to ensure that each one is configured correctly.*

Although it is possible to move the mouse between displays, there is a restriction when dragging items, such as windows. It is only possible to drag the mouse to the display edge. You should then move the mouse to the target display to complete the drag. If this is not possible, then you should use the Move command to move the window using cursor keys instead.

## USB Configuration

Logged on users: admin, admin

Force USB Fullspeed ☐

Enable File Transfer ☐

USB Product Descriptor

USB Manufacturer Descriptor

Save USB Configuration Cancel

### Enable File Transfer

When checked, allows file transfers to occur. See page 22.

### Force USB Fullspeed

When checked, forces the ipeps+ USB device to work in full-speed mode. The default is high speed.

### USB Product Descriptor

Allows you to edit the text string displayed in the host computer USB device properties.

### USB Manufacturer Descriptor

Allows you to edit the text string displayed in the host computer USB device properties.

## Reboot Unit

Performs a complete cold boot of the AdderLink ipeps+ module.



## Time & Date Configuration

This page allows you to configure all aspects relating to time and date within the unit.

Logged on users: admin

Time And Date

Timezone specifier (e.g. EST5)

Use NTP ☐

NTP Server IP address

Set Time from NTP Server

Save Time & Date Configuration Cancel

### Use NTP

When this option is selected, the AdderLink ipeps+ module will synchronize its internal clocks using information from the (Network Time Protocol) server listed in the *NTP Server IP address* field.

### NTP Server IP address

Optionally enter the IP address for a known Network Time Protocol server.

### Set Time from NTP Server

Click to immediately use the time and date information from the listed NTP server.

### Timezone specifier

Optionally enter a recognized timezone specifier related to the current position of the AdderLink ipeps+ module. When an NTP server is used, the specifier will be used to provide the correct real time.

The timezone specifier takes the following form:

*std offset dst [offset], start[/time], end[/time]*

The *std* and *offset* specify the standard time zone, such as GMT and 0, or CET and -1, or EST and 5, respectively.

The *dst* string and *[offset]* specify the name and offset for the corresponding Daylight Saving Time zone; if the *offset* is omitted, it defaults to one hour ahead of standard time. The remainder of the specification describes when Daylight Saving Time is in effect. The *start* field is when Daylight Saving Time goes into effect and the *end* field is when the change is made back to standard time. The most common format used for the daylight saving time is: *Mm.w.d*

Where: *m* specifies the month and must be between 1 and 12. The day *d* must be between 0 (Sunday) and 6. The week *w* must be between 1 and 5; week 1 is the first week in which day *d* occurs, and week 5 specifies the *last d* day in the month.

The *time* fields specify when, in the local time currently in effect, the change to the other time occurs. If omitted, the default is 02:00:00.

Typical examples are:

UK:	GMT0BST,M3.5.0/1,M10.5.0/2
Central Europe:	CET-1CEST,M3.5.0/2,M10.5.0/3
US Eastern:	EST5EDT,M3.2.0/2,M11.1.0/2
US Pacific:	PST5PDT,M3.2.0/2,M11.1.0/2

### For further details

- For details of timezone specifier formats, please refer to: [http://www.gnu.org/software/libc/manual/html\\_node/TZ-Variable.html](http://www.gnu.org/software/libc/manual/html_node/TZ-Variable.html)
- For details of the Network Time Protocol (main RFC number: 1305; the SNTP subset used as the basis for the AdderLink ipeps+ module: 4330) <http://www.ietf.org/rfc.html>

### To get here

- Using VNC viewer, log on as the 'admin' user.
- Click the 'Configure' button in the top right corner.
- Click the 'Time & Date Configuration' option.

## Network Configuration

This page allows you to configure the various aspects of the IP port. See also [Appendix 3 - Networking issues](#) for useful configuration advice.

Logged on users: admin

MAC address: 00:0F:58:04:91:2F

Use DHCP	<input type="checkbox"/>
IP Address	192.168.1.12
IP Network Mask	255.255.255.0
IP Gateway	0.0.0.0
DNS Server	8.8.8.8

VNC Port: 5900

HTTP Port (0=disabled): 80

IP Access Control

Add Remove Up Down Edit

+0.0.0.0/0.0.0.0

Save Network Configuration Cancel

### MAC address

Media Access Control address – this is the unique and unchangeable code that was hard coded within the module when it was built. It consists of six 2-digit hexadecimal (base 16) numbers separated by colons. A section of the MAC address identifies the manufacturer, while the remainder is effectively the unique electronic serial number of your particular unit.

### Use DHCP

Determines whether a DHCP (Dynamic Host Configuration Protocol) server should be consulted on the connected network to automatically set an appropriate IP Address, IP Network Mask and IP Gateway.

### IP Address

If the *Use DHCP* option is set to No, use this option to set an IP address for the AdderLink ipeps+ module which is appropriate for the network to which it is connected.

### To get here

- 1 Using VNC viewer, log on as the 'admin' user.
- 2 Click the 'Configure' button in the top right corner.
- 3 Click the 'Network Configuration' option.

### IP Network Mask

If the *Use DHCP* option is set to No, use this option to set a subnet-mask for the AdderLink ipeps+ module which is appropriate for the network to which it is connected.

### IP Gateway

If the *Use DHCP* option is set to No, use this option to set a gateway address for a network router which gives access to another network, to be used whenever a required address lies outside the current network.

### DNS Server

If the *Use DHCP* option is set to No, enter a valid IP address here for a Domain Name System server which is reachable through the connected network.

### VNC Port

This is the logical link through which communications with a remote VNC viewer will be channelled. The default setting is 5900 which is a widely recognized port number for use by VNC software. However, in certain circumstances it may be advantageous to alter this number - see 'Security issues with ports' for more details.

### HTTP Port

This is the logical link through which communications with a remote web browser will be channelled. The default setting of 80 is an established standard for web (HTTP – HyperText Transfer Protocol) traffic though this can be changed to suit your local network requirements.

### IP Access Control

This section allows you to optionally specify ranges of addresses which will or won't be granted access to the AdderLink ipeps+ module. If this option is left unchanged, then the default entry of '+0.0.0.0/0.0.0.0' ensures that access from all IP addresses will be permitted. See [Setting IP access control](#) for details.

## Setting IP Access Control

The golden rule with this feature is 'Include before you exclude' or to put it another way 'Arrange *allowed* addresses in the list *before* the *denied* addresses'.

This is because the positions of entries in the list are vitally important. Once a range of addresses is denied access, it is not possible to make exceptions for particular addresses within that range. For instance, if the range of addresses from A to F are denied access first, then the address C could not be granted access lower down the list. Address C needs to be placed in the list before the denied range.

**IMPORTANT:** This feature should be configured with extreme caution as it is possible to deny access to everyone. If such an error occurs, you will need to either perform a [reset to factory default settings](#) or use the local console (and [Clear IP Access Control](#)) in order to regain access.



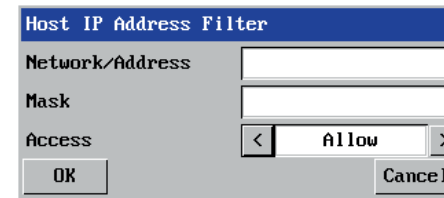
In the list, access control addresses prefixed by '+' are allow entries while those prefixed by '-' are deny entries.

### To get here

- 1 Using VNC viewer, log on as the 'admin' user.
- 2 Click the 'Configure' button in the top right corner.
- 3 Click the 'Network Configuration' option.
- 4 In the Set IP Access section, click Add or Edit, as necessary.

### To define a new IP access control entry

- 1 Click the Add button to display a popup dialog:



#### Network/Address

Enter the network address that is to be allowed or denied access. If a range of addresses is being specified then specify any one of the addresses within the range and use the Mask entry to indicate the size of the range.

#### Mask

Enter an IP network mask that indicates the range of addresses that are to be allowed or denied access. For instance, if only a single specified IP address were to be required, the mask entry would be 255.255.255.255 in order to specify a single location.

#### Access

Use the arrow buttons to select either 'Allow' or 'Deny' as appropriate.

- 2 Enter the base network address, the mask and select the appropriate access setting.
- 3 Click the OK button.

### To reorder access control entries

**IMPORTANT:** When reordering, ensure that any specific allowed addresses are listed higher in the list than any denied addresses. Take care not to invoke any deny access settings that would exclude valid users.

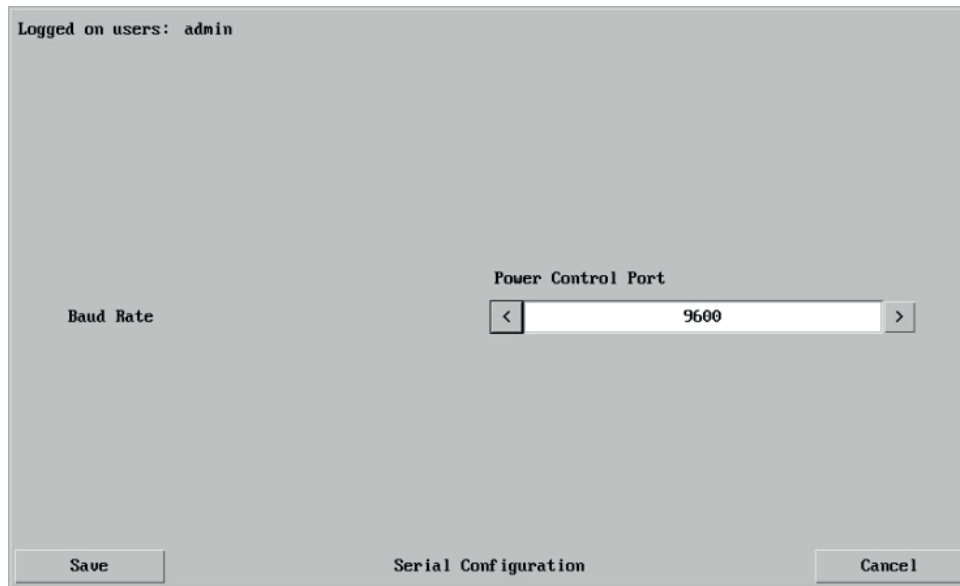
- 1 In the access control list, click on the entry to be moved.
- 2 Click the Up or Down buttons as appropriate.

### To edit/remove access control entries

- 1 In the access control list, click on the appropriate entry.
- 2 Click either the Edit or Remove button as appropriate.

## Serial Port Configuration

In order to support serial connections for power control purposes, a USB to Serial port adapter is required (third party adapters with Prolific PL2302 or FTDI chipsets are supported). Once installed, this page allows you to configure the baud rate of the serial port (via the USB connection) that can be used to control power switch devices. A full range of standard baud rates are available.



The image shows a 'Serial Configuration' dialog box. At the top left, it says 'Logged on users: admin'. In the center, there is a section titled 'Power Control Port' which contains a 'Baud Rate' label and a numeric input field with the value '9600'. The input field has left and right arrow buttons. At the bottom left is a 'Save' button, and at the bottom right is a 'Cancel' button. The title bar of the dialog is 'Serial Configuration'.

### Baud Rate

Determines the communication speed of the serial port (via a third party converter attached to one of the AdderLink ipeps+ USB ports). The other communication settings are fixed as: No parity, 8 bit word, 1 stop bit.

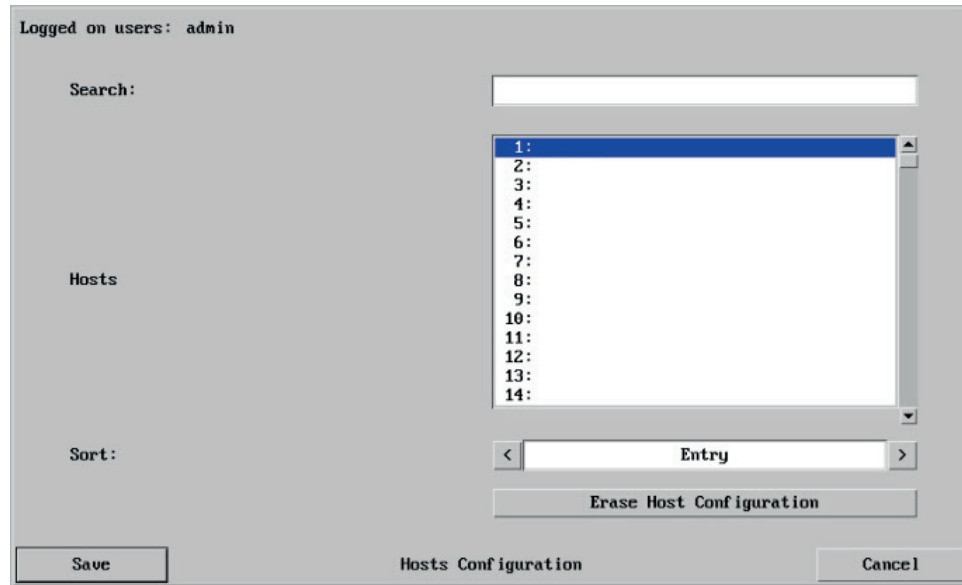
### To get here

- 1 Using VNC viewer, log on as the 'admin' user.
- 2 Click the 'Configure' button in the top right corner.
- 3 Click the 'Serial port Configuration' option.



## Host Configuration

This page provides the opportunity to configure various details for each of the host systems that may be connected to the AdderLink ipeps+ module. Each entry can be configured with a name, the permitted users, the hot key combinations required to switch to it and, if required, appropriate power control commands.



### Sort

Allows you to reorder the list of hosts either alphabetically or by entry number.

### Erase Host Configuration

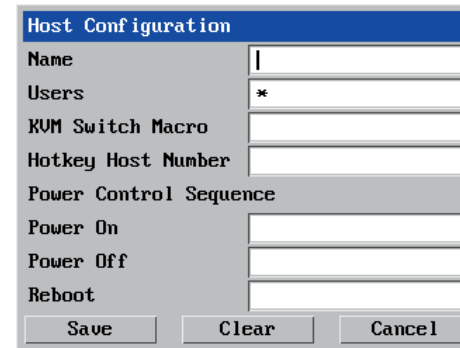
Removes all hosts from the list.

#### To get here

- 1 Using VNC viewer, log on as the 'admin' user.
- 2 Click the 'Configure' button in the top right corner.
- 3 Click the 'Host Configuration' option.

### To create a new host entry

- 1 Click one of the host entries to reveal a Host configuration dialog.



- 2 Enter the required information in each field.

- 3 Click the OK button.

#### Name

Enter the name that will be displayed in the viewer window when you click the Host button.

#### Users

Select the users that will be permitted to connect to this host. Either enter \* to allow all users or a list of users separated by commas.

#### KVM Switch Macro

Declare the hot key sequence that will cause the KVM switch to link with the required host system. *Note: If this is left blank, the host will not be included in the Hosts menu.*

#### Hotkey Host Number

Declare the numeric sequence that is pressed together with the VNC viewer hotkeys (usually Ctrl + Alt) to select this host system, which is the same value as the KVM port number.

#### Power On

Enter the code required to make an attached power control unit (via a third party converter attached to one of the AdderLink ipeps+ USB ports) apply power to the host.

#### Power Off

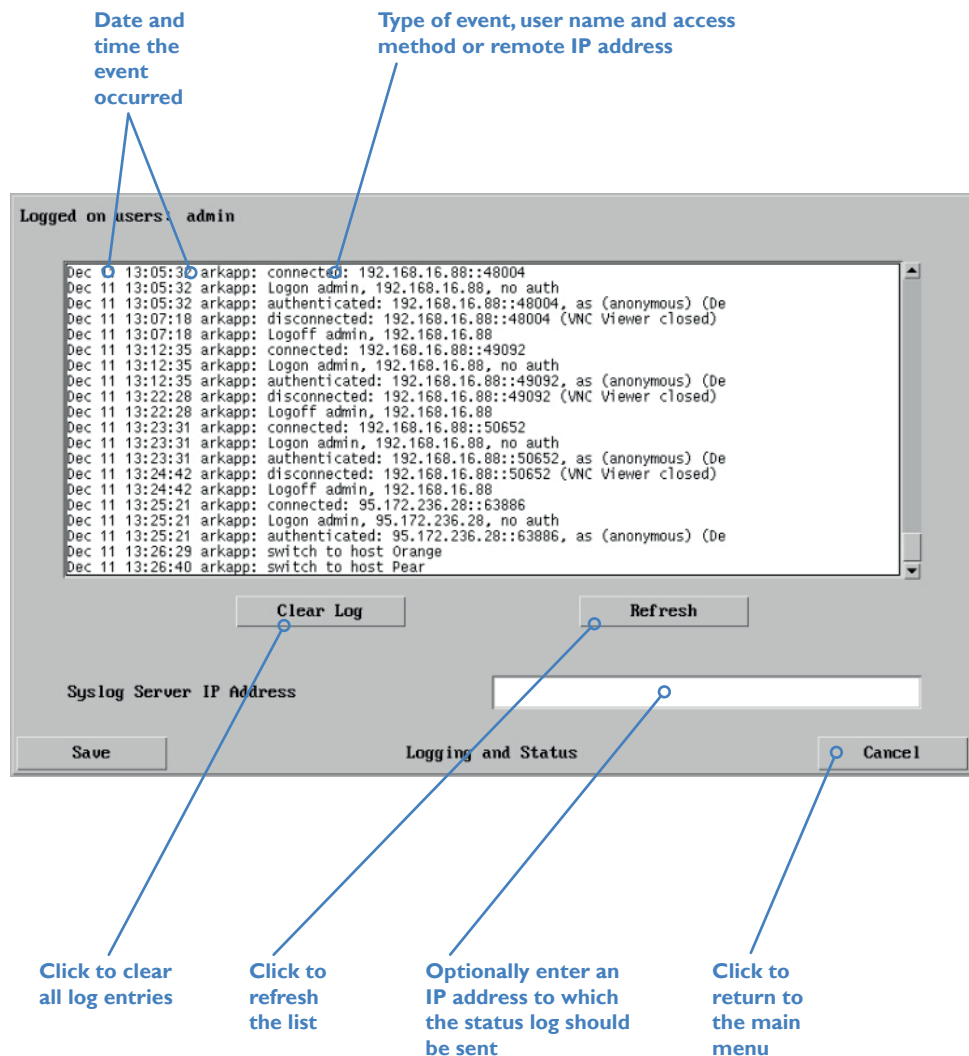
Enter the code required to make an attached power control unit (via a third party converter attached to one of the AdderLink ipeps+ USB ports) remove power from the selected host.

#### Reboot

Enter the code required to make an attached power control unit remove power and then re-apply it a few seconds later.

## Logging and Status

This screen provides various details about the user activity on the AdderLink ipeps+ module.



The screenshot shows the 'Logging and Status' window. At the top, it says 'Logged on users: admin'. Below this is a list of log entries. Annotations point to various parts of the window:

- Date and time the event occurred:** Points to the timestamp 'Dec 11 13:05:30' in the first log entry.
- Type of event, user name and access method or remote IP address:** Points to the event description 'arkapp: connected: 192.168.16.88::48004' in the first log entry.
- Click to clear all log entries:** Points to the 'Clear Log' button.
- Click to refresh the list:** Points to the 'Refresh' button.
- Optionally enter an IP address to which the status log should be sent:** Points to the 'Syslog Server IP Address' text input field.
- Click to return to the main menu:** Points to the 'Cancel' button.

The log entries include:

```

Dec 11 13:05:30 arkapp: connected: 192.168.16.88::48004
Dec 11 13:05:32 arkapp: Logon admin, 192.168.16.88, no auth
Dec 11 13:05:32 arkapp: authenticated: 192.168.16.88::48004, as (anonymous) (De
Dec 11 13:07:18 arkapp: disconnected: 192.168.16.88::48004 (VNC Viewer closed)
Dec 11 13:07:18 arkapp: Logoff admin, 192.168.16.88
Dec 11 13:12:35 arkapp: connected: 192.168.16.88::49092
Dec 11 13:12:35 arkapp: Logon admin, 192.168.16.88, no auth
Dec 11 13:12:35 arkapp: authenticated: 192.168.16.88::49092, as (anonymous) (De
Dec 11 13:22:28 arkapp: disconnected: 192.168.16.88::49092 (VNC Viewer closed)
Dec 11 13:22:28 arkapp: Logoff admin, 192.168.16.88
Dec 11 13:23:31 arkapp: connected: 192.168.16.88::50652
Dec 11 13:23:31 arkapp: Logon admin, 192.168.16.88, no auth
Dec 11 13:23:31 arkapp: authenticated: 192.168.16.88::50652, as (anonymous) (De
Dec 11 13:24:42 arkapp: disconnected: 192.168.16.88::50652 (VNC Viewer closed)
Dec 11 13:24:42 arkapp: Logoff admin, 192.168.16.88
Dec 11 13:25:21 arkapp: connected: 95.172.236.28::63886
Dec 11 13:25:21 arkapp: Logon admin, 95.172.236.28, no auth
Dec 11 13:25:21 arkapp: authenticated: 95.172.236.28::63886, as (anonymous) (De
Dec 11 13:26:29 arkapp: switch to host Orange
Dec 11 13:26:40 arkapp: switch to host Pear
  
```

### To copy and paste the log

You can copy the information listed within the log and paste it into another application.

- 1 While viewing the log screen, press Ctrl and C, to copy the data into the clipboard.
- 2 In a text application (i.e. Word, WordPad, Notepad) press Ctrl and V, or right mouse click and 'Paste'.

### Syslog Server IP Address

Logging information can optionally be sent, as it occurs, to a separate system using the standard Syslog protocol. Enter the IP address of a suitable system in the field provided.

#### For further details

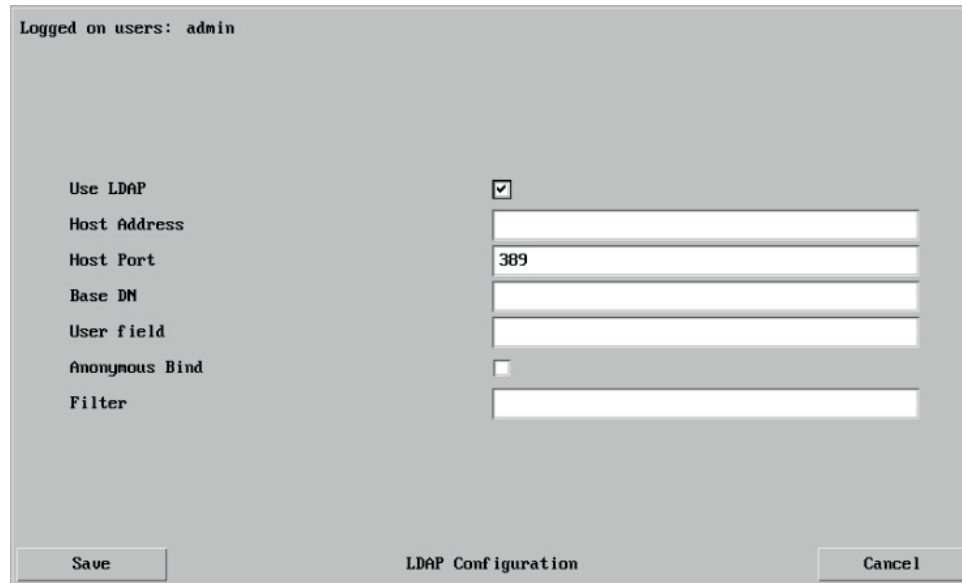
- For details of the Syslog protocol (RFC number: 3164) <http://www.ietf.org/rfc.html>

### To get here

- 1 Using VNC viewer log on as the 'admin' user.
- 2 Click the 'Configure' button in the top right corner.
- 3 Click the 'Logging and Status' option.

## LDAP Configuration

The AdderLink ipeps+ can optionally use the industry standard LDAP (Lightweight Directory Access Protocol) to allow user authentication to occur in conjunction with an externally held database. This screen allows you to configure details related to the creation of an LDAP link to an external directory service, such as an Active Directory server.



Logged on users: admin

Use LDAP ☒

Host Address

Host Port

Base DN

User field

Anonymous Bind ☐

Filter

Save LDAP Configuration Cancel

### To get here

- 1 Using VNC viewer log on as the 'admin' user.
- 2 Click the 'Configure' button in the top right corner.
- 3 Click the 'LDAP Configuration' option.

### Use LDAP

Tick this option to enable the Lightweight Directory Access Protocol features of the unit.

### Host Address

Enter the IP address of the LDAP server that holds the required directory service.

### Host Port

The standard port address for LDAP links is 389 and this should not need to be changed unless special circumstances exist.

### Base DN

This field allows you to enter the top level of the LDAP directory tree at which to start an LDAP search. An example Base DN value might be:

"dc=catxip1000,dc=com"

### User field

Enter the LDAP database field that will be used to match each user name against. The details entered here will depend on the specific LDAP database being used - 'uid' or 'cn' are commonly used values.

### Anonymous Bind

If left unchecked then bind requests are sent with username (Base DN) and password (more suitable for Active Directory applications).

If checked, bind requests are anonymous (more suitable for Linux LDAP implementations).

**Note: Anonymous bindings are not recommended.**

### Filter

Search filters enable you to define search criteria and provide more efficient and effective searches. AdderLink ipeps+ supports the LDAP search filters defined in RFC2254. These search filters are represented by Unicode strings.

For example:

"(&(objectCategory=person)(objectClass=user)(!(cn=pete)))"

All user objects except "pete"

"(&(objectCategory=person)(objectClass=contact)(|(sn=Jones)(sn=Brown)))"

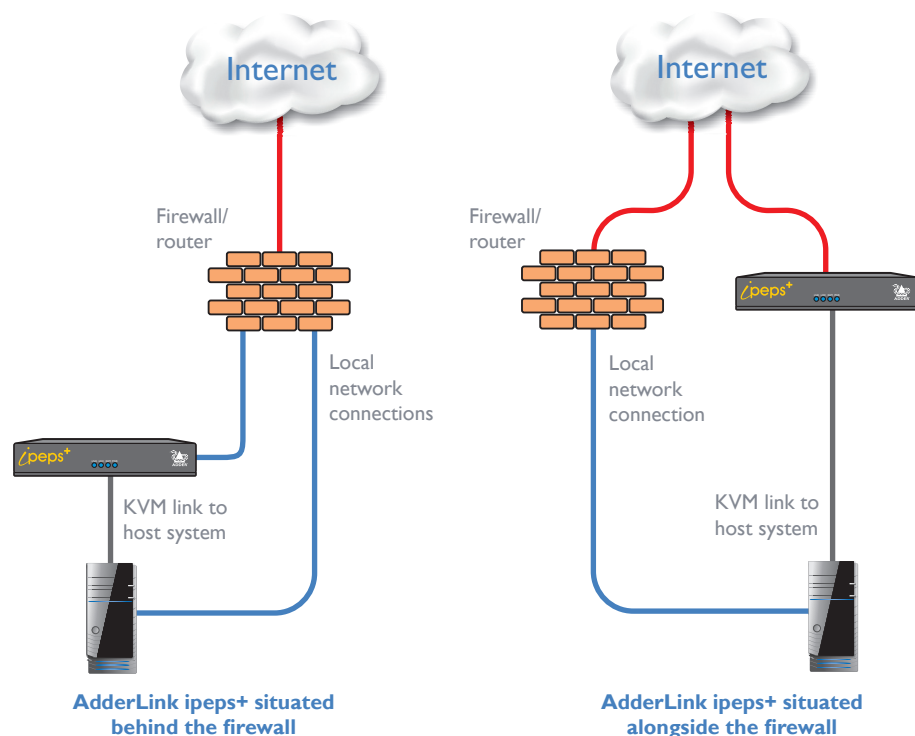
All contacts with a surname equal to "Jones" or "Brown"

## APPENDIX 3 - NETWORKING ISSUES

Thanks to its robust security the AdderLink ipeps+ offers you great flexibility in how it integrates into an existing network structure. The AdderLink ipeps+ is designed to reside either on an internal network, behind a firewall/router or alternatively with its own direct Internet connection.

### Positioning AdderLink ipeps+ in the network

Every network setup is different and great care needs to be taken when introducing a powerful device such as the AdderLink ipeps+ into an existing configuration. A common cause of potential problems can be in clashes with firewall configurations. For this reason the AdderLink ipeps+ is designed to be intelligent, flexible and secure. With the minimum of effort the AdderLink ipeps+ can reside either behind the firewall or alongside with its own separate Internet connection.



**IMPORTANT:** When the AdderLink ipeps+ is accessible from the Internet, you must ensure that sufficient security measures are employed.

### Placing AdderLink ipeps+ behind a router or firewall

A possible point of contention between the AdderLink ipeps+ and a firewall can occasionally arise over the use of IP ports. Every port through the firewall represents a potential point of attack from outside and so it is advisable to minimize the number of open ports. The AdderLink ipeps+ usually uses two separate port numbers, however; these are easily changeable and can even be combined into a single port.

**IMPORTANT:** The correct configuration of routers and firewalls requires advanced networking skills and intimate knowledge of the particular network. Adder Technology cannot provide specific advice on how to configure your network devices and strongly recommend that such tasks are carried out by a qualified professional.

#### Port settings

As standard, the AdderLink ipeps+ uses two ports to support its two types of viewer:

- **Port 80** for users making contact with a web browser; and
- **Port 5900** for those using the VNC viewer.

When these port numbers are used, VNC viewers and web browsers will locate the AdderLink ipeps+ correctly using only its network address. The firewall/router must be informed to transfer traffic, requesting these port numbers, through to the AdderLink ipeps+.

#### When a web server is also on the local network

Port 80 is the standard port used by web (HTTP) servers. If the AdderLink ipeps+ is situated within a local network that also includes a web server or any other device serving port 80 then, if you want to use the web browser interface from outside the local network environment, the HTTP port number of the AdderLink ipeps+ must be changed.

When you change the HTTP port to anything other than 80, then each remote browser user will need to specify the port address as well as the IP address. For instance, if you set the HTTP port to '8000' and the IP address is '192.168.47.10' then browser users will need to enter:

`http://192.168.47.10:8000`

(Note the single colon that separates the IP address and the port number).

The firewall/router would also need to be informed to transfer all traffic to the new port number through to the AdderLink ipeps+.

#### If you need to change the VNC port number

If you change the VNC port to anything other than 5900, then each VNC viewer user will need to specify the port address as well as the IP address. For instance, if you set the VNC port to '11590' and the IP address is '192.168.47.10' then VNC viewer users will need to enter:

`192.168.47.10::11590`

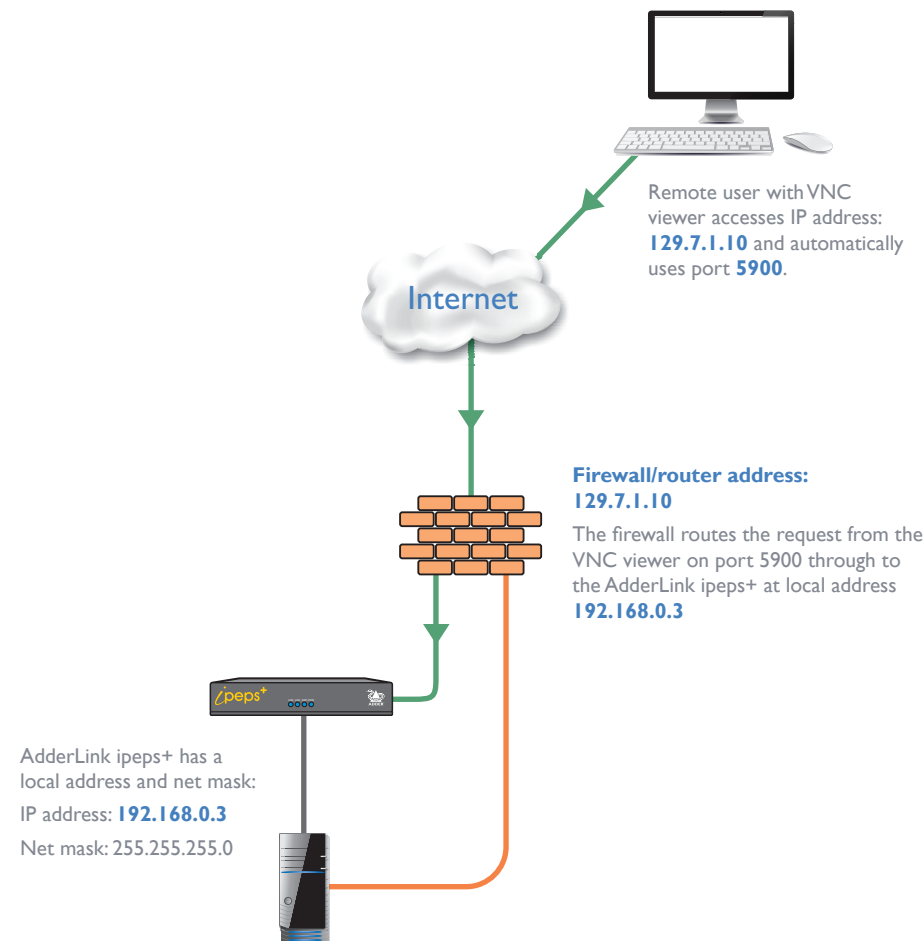
(Note the **double** colons that separate the IP address and port number).

The firewall/router would also need to be informed to transfer all traffic to the new port number through to the AdderLink ipeps+.

## Addressing

When the AdderLink ipeps+ is situated within the local network, you will need to give it an appropriate local IP address and IP network mask. This is achieved most easily using the DHCP server option which will apply these details automatically. If a DHCP server is not available on the network, then these details need to be applied manually in accordance with the network administrator.

The firewall/router must then be informed to route incoming requests to port 5900 or port 80 (if available) through to the local address being used by the AdderLink ipeps+.



## To discover a DHCP-allocated IP address

Once a DHCP server has allocated an IP address, you will need to know it in order to access the AdderLink ipeps+ via a network connection. To discover the allocated IP address:

- 1 Within [Network configuration](#), set the 'Use DHCP' option to 'Yes' and select 'Save'. Once the page is saved, the AdderLink ipeps+ will contact the DHCP server and obtain a new address.
- 2 Re-enter the same 'Network configuration' screen where the new IP address and network mask should be displayed.

## DNS addressing

As with any other network device, you can arrange for your AdderLink ipeps+ to be accessible using a name, rather than an IP address. This can be achieved in two main ways:

- For small networks that do not have a DNS (Domain Name System) server, edit the 'hosts' files on the appropriate remote systems. Using the hosts file, you can manually link the AdderLink ipeps+ address to the required name.
- For larger networks, declare the IP address and required name to the DNS server of your local network.

The actual steps required to achieve either of these options are beyond the scope of this document.

## Placing AdderLink ipeps+ alongside the firewall

AdderLink ipeps+ is built from the ground-up to be secure. It employs a sophisticated 128bit public/private key system that has been rigorously analysed and found to be highly secure (a security white paper is available upon request from Adder Technology Ltd). Therefore, you can position the AdderLink ipeps+ alongside the firewall and control a computer that is also IP connected within the local network.

*IMPORTANT: If you make the AdderLink ipeps+ accessible from the public Internet, care should be taken to ensure that the maximum security available is activated. You are strongly advised to enable encryption and use a strong password. Security may be further improved by restricting client IP addresses, using a non-standard port number for access.*

### Ports

In this configuration there should be no constraints on the port numbers because the AdderLink ipeps+ will probably be the only device at that IP address. Therefore, maintain the HTTP port as 80 and the VNC port as 5900.

### Addressing

When the AdderLink ipeps+ is situated alongside the firewall, it will require a public static IP address (i.e. one provided by your Internet service provider).

More addressing information:

[Discover DHCP-allocated addresses](#)

[DNS addressing](#)

## APPENDIX 4 - SECURITY CONSIDERATIONS

The security capabilities offered by the AdderLink ipeps+ are only truly effective when they are correctly used. An open or weak password or unencrypted link can cause security loopholes and opportunities for potential intruders. For network links in general and direct Internet connections in particular, you should carefully consider and implement the following:

- Ensure that [encryption is enabled](#).
- Ensure that you have selected secure passwords with at least 8 characters, a mixture of upper and lower case and numeric characters plus a special character.
- Reserve the admin password for administration use only and use a non-admin user profile for day-to-day access.
- Use the latest Secure VNC viewer (this has more in-built security than is available with the Java viewer).
- Use non-standard [port numbers](#).
- Restrict the range of IP addresses that are allowed to access the AdderLink ipeps+ to only those that you will need to use. To [restrict IP access](#).
- Do NOT Force VNC protocol 3.3.
- Ensure that the computer accessing the AdderLink ipeps+ is clean of viruses and spyware and has up-to-date firewall and anti-virus software loaded that is appropriately configured.
- Avoid accessing the AdderLink ipeps+ from public computers.

Security can be further improved by using the following suggestions:

- Place the AdderLink ipeps+ behind a firewall and use port the numbers to route the VNC network traffic to an internal IP address.
- Review the activity log from time to time to check for unauthorized use.
- Lock your server consoles after they have been used.

A security white paper that gives further details is available upon request from Adder Technology Limited.

### Older versions of VNC Viewer

Although ipeps+ allows passwords of up to 16 characters, versions of VNC Viewer pre 4.2 will only validate up to 8 characters. Administrators may prevent such access by setting the encryption scheme to 'Always On' or 'Always Max'. See page 34.

APPENDIX 5 - PRODUCT COMPATIBILITY

AdderLink ipeps+ is compatible with the following Adder products:

- AdderView DDX and AdderLink XDIP small Matrix systems.
- AdderLink Infinity 1000 and AdderLink Infinity 2000 receivers to allow a VNC connection into an Infinity Matrix.
- AdderView AV4PRO KVM switch to allow remote access to four USB/DVI computers.

*Note: AdderLink ipeps+ is NOT compatible with the AdderView AV8PRO KVM switch.*



## APPENDIX 6 - HOTKEY SEQUENCES

AdderLink ipeps+ allows you to enter commands suitable for any KVM switch in order to choose from up to 128 host systems. These switching commands can take the form of hotkey sequences that emulate standard keypress combinations or, for KVM switches that support the Adder Port Direct format, merely basic port numbers.

### Hotkey sequences

Almost any combination of keypresses can be emulated using the following notations:

- +** means press down the key that follows;
- means release the key that follows
- +—** means press and then release the key that follows
- \*** means add a delay. The standard delay period is 250ms, however, if a number immediately follows the asterisk, this will define an alternate delay period (in milliseconds)

### Notes

- The entries are not case sensitive.
- All characters can be entered using their ASCII codes, from 32 to 126 (i.e. A,B,C, ... 1,2,3 etc.) with the exception of the special characters above.
- It is not necessary to specify all keys to be released at the end because they are all released automatically after the last code.
- A number of KVM switches from alternative manufacturers use hot key sequences that begin with a press/release of either the Scroll Lock or Ctrl keys. These often require a delay between the initial key press and the channel number to allow the switch to respond. A 500ms delay is usually sufficient.

### Examples

To send the command *Ctrl + Alt 4* you should use the following: `+Ctrl+Alt+4`.

To send the command *Ctrl + Alt 12* you should use the following: `+Ctrl+ALT+—1+2` (the '+—1' entry causes the 1 key to be pressed and released before the 2 key is pressed).

To send the command *Scroll lock 1 + Enter* (with a 500ms delay) you should use the following: `+—Scr*500+1+Ent`

### Main control keys (see 'Using abbreviations')

Backspace | Tab | Return | Enter | Ctrl | Alt | Win | Shift | LShift | RShift  
LCtrl | RCtrl | LAlt | AltGr | RAlt | LWin | RWin | Menu | Escape | Space  
CapsLock | NumLock | PrintScreen | Scrolllock

### Math operand keys (see 'Using abbreviations')

Add (Plus) | Subtract (Minus) | Multiply

### Central control keys (see 'Using abbreviations')

Insert | Delete | Home | End | PageUp | PageDown

Up | Down | Left | Right | Print | Pause

### Keypad keys (see 'Using abbreviations')

KP\_Insert | KP\_Delete | KP\_Home | KP\_End | KP\_PageUp

KP\_PageDown | KP\_Up | KP\_Down | KP\_Left | KP\_Right | KP\_Enter

KP\_Add | KP\_Subtract | KP\_Divide | KP\_Multiply

KP\_0 to KP\_9

### Function keys

F1 | F2 | F3 | F4 | F5 | F6 | F7 | F8 | F9 | F10 | F11 | F12

### Creating macro sequences

Hot key macro sequences can be up to 256 characters long. All keys are assumed to be released at the end of a line, however, you can also determine that a key is pressed and released within a sequence. Any of the following three examples will send a command that emulates and a press and release of the Scroll Lock key:

`+SCROLL-SCROLL`

`+—SCROLL`

`+SCROLL—`

Example:

`+—SCROLL+—SCROLL+1+ENTER`

Press and release scroll twice, press 1 then enter then release all keys (equivalent definition is `+SCROLL-SCROLL+SCROLL-SCROLL+1+ENTER—1—ENTER`)

### Using abbreviations

To reduce the length of the key definitions, any unique abbreviation for a key can be used. For example: "scroll", "scr" and even "sc" all provide an identifiable match for "ScrollLock" whereas "en" could not be used because it might mean "Enter" or "End" ("ent" would be suitable for "Enter").

*Note: Hotkey sequences and abbreviations are not case sensitive.*

For information about where to enter these codes, please see the section [Host configuration](#).

## APPENDIX 7 - OPEN SOURCE LICENSES

This product includes binaries that are derived from the open source community. The modules listed below are licenced under the GNU General Public License v2 and must be provided, in source form, on request:

u-boot  
linux-arm-freescale  
busybox  
util-linux  
udev  
e2fsprogs  
freetype  
libftw  
linux-pam  
pam-ldap

**GPLv2 License** This program is free software: you can redistribute it and/or modify it under the terms of the GNU General Public License as published by the Free Software Foundation, either version 2 of the License, or (at your option) any later version.

This program is distributed in the hope that it will be useful, but WITHOUT ANY WARRANTY; without even the implied warranty of MERCHANTABILITY or FITNESS FOR A PARTICULAR PURPOSE. See the GNU General Public License for more details.

You should have received a copy of the GNU General Public License along with this program. If not, see <<https://www.gnu.org/licenses/>>.

The software included in this product contains copyrighted software that is licensed under the GPL. You may obtain the complete Corresponding Source code from Adder for a period of three years after the last shipment of this product, which will be no earlier than 2028, by contacting support@adder.com or writing to :

Attn:ACD/Open Source Request, Adder Technology Ltd, Saxon Way, Bar Hill, Cambridge, CB23 8SL, United Kingdom

Please write "Source for product XXXXXXXX " in the subject line (where XXXXXX is the model and version number). This offer is valid to anyone in receipt of this information.

This product includes binaries that are derived from the open source community. The modules listed below are licenced under the GNU Lesser General Public License v2.1 and must be provided, in source form, on request:

kmod  
libalsa

In addition to the GPL modules listed, this product also includes binaries derived from 3rd party open sources that have their own license requirements. Each module is listed below with their required Copyright statement and distribution conditions.

- Module: openssl

### OpenSSL LICENSE

The OpenSSL toolkit stays under a dual license, i.e. both the conditions of the OpenSSL License and the original SSLeay license apply to the toolkit. See below for the actual license texts. Actually both licenses are BSD-style Open Source licenses. In case of any license issues related to OpenSSL please contact openssl-core@openssl.org.

OpenSSL License; Copyright (c) 1998-2011 The OpenSSL Project. All rights reserved.

Redistribution and use in source and binary forms, with or without modification, are permitted provided that the following conditions are met:

1. Redistributions of source code must retain the above copyright notice, this list of conditions and the following disclaimer.
2. Redistributions in binary form must reproduce the above copyright notice, this list of conditions and the following disclaimer in the documentation and/or other materials provided with the distribution.
3. All advertising materials mentioning features or use of this software must display the following acknowledgment: "This product includes software developed by the OpenSSL Project for use in the OpenSSL Toolkit. (<http://www.openssl.org/>)"
4. The names "OpenSSL Toolkit" and "OpenSSL Project" must not be used to endorse or promote products derived from this software without prior written permission. For written permission, please contact openssl-core@openssl.org.
5. Products derived from this software may not be called "OpenSSL" nor may "OpenSSL" appear in their names without prior written permission of the OpenSSL Project.
6. Redistributions of any form whatsoever must retain the following acknowledgment: "This product includes software developed by the OpenSSL Project for use in the OpenSSL Toolkit (<http://www.openssl.org/>)"

THIS SOFTWARE IS PROVIDED BY THE OpenSSL PROJECT "AS IS" AND ANY EXPRESSED OR IMPLIED WARRANTIES, INCLUDING, BUT NOT LIMITED TO, THE IMPLIED WARRANTIES OF MERCHANTABILITY AND FITNESS FOR A PARTICULAR PURPOSE ARE DISCLAIMED. IN NO EVENT SHALL THE OpenSSL PROJECT OR ITS CONTRIBUTORS BE LIABLE FOR ANY DIRECT, INDIRECT, INCIDENTAL, SPECIAL, EXEMPLARY, OR CONSEQUENTIAL DAMAGES (INCLUDING, BUT NOT LIMITED TO, PROCUREMENT OF SUBSTITUTE GOODS OR SERVICES; LOSS OF USE, DATA, OR PROFITS; OR BUSINESS INTERRUPTION) HOWEVER CAUSED AND ON ANY THEORY OF LIABILITY, WHETHER IN CONTRACT, STRICT LIABILITY, OR TORT (INCLUDING NEGLIGENCE OR OTHERWISE) ARISING IN ANY WAY OUT OF THE USE OF THIS SOFTWARE, EVEN IF ADVISED OF THE POSSIBILITY OF SUCH DAMAGE.

This product includes cryptographic software written by Eric Young (eay@cryptsoft.com). This product includes software written by Tim Hudson (tjh@cryptsoft.com).

### Original SSLeay License

Copyright (C) 1995-1998 Eric Young (eay@cryptsoft.com) All rights reserved.

This package is an SSL implementation written by Eric Young (eay@cryptsoft.com). The implementation was written so as to conform with Netscapes SSL. This library is free for commercial and non-commercial use as long as the following conditions are adhered to. The following conditions apply to all code found in this distribution, be it the RC4, RSA, lhash, DES, etc., code; not just the SSL code. The SSL documentation included with this distribution is covered by

the same copyright terms except that the holder is Tim Hudson (tjh@cryptsoft.com).

Copyright remains Eric Young's, and as such any Copyright notices in the code are not to be removed. If this package is used in a product, Eric Young should be given attribution as the author of the parts of the library used. This can be in the form of a textual message at program startup or in documentation (online or textual) provided with the package. Redistribution and use in source and binary forms, with or without modification, are permitted provided that the following conditions are met:

1. Redistributions of source code must retain the copyright notice, this list of conditions and the following disclaimer.
2. Redistributions in binary form must reproduce the above copyright notice, this list of conditions and the following disclaimer in the documentation and/or other materials provided with the distribution.
3. All advertising materials mentioning features or use of this software must display the following acknowledgement: "This product includes cryptographic software written by Eric Young (eay@cryptsoft.com)" The word 'cryptographic' can be left out if the routines from the library being used are not cryptographic related :-).
4. If you include any Windows specific code (or a derivative thereof) from the apps directory (application code) you must include an acknowledgement: "This product includes software written by Tim Hudson (tjh@cryptsoft.com)"

THIS SOFTWARE IS PROVIDED BY ERIC YOUNG ``AS IS'' AND ANY EXPRESS OR IMPLIED WARRANTIES, INCLUDING, BUT NOT LIMITED TO, THE IMPLIED WARRANTIES OF MERCHANTABILITY AND FITNESS FOR A PARTICULAR PURPOSE ARE DISCLAIMED. IN NO EVENT SHALL THE AUTHOR OR CONTRIBUTORS BE LIABLE FOR ANY DIRECT, INDIRECT, INCIDENTAL, SPECIAL, EXEMPLARY, OR CONSEQUENTIAL DAMAGES (INCLUDING, BUT NOT LIMITED TO, PROCUREMENT OF SUBSTITUTE GOODS OR SERVICES; LOSS OF USE, DATA, OR PROFITS; OR BUSINESS INTERRUPTION) HOWEVER CAUSED AND ON ANY THEORY OF LIABILITY, WHETHER IN CONTRACT, STRICT LIABILITY, OR TORT (INCLUDING NEGLIGENCE OR OTHERWISE) ARISING IN ANY WAY OUT OF THE USE OF THIS SOFTWARE, EVEN IF ADVISED OF THE POSSIBILITY OF SUCH DAMAGE.

The licence and distribution terms for any publicly available version or derivative of this code cannot be changed. i.e. this code cannot simply be copied and put under another distribution licence [including the GNU Public Licence.]

-----  
- Module: dropbear

Dropbear contains a number of components from different sources, hence there are a few licenses and authors involved. All licenses are fairly non-restrictive. The majority of code is written by Matt Johnston, under the license below. Portions of the client-mode work are (c) 2004 Mihnea Stoenescu, under the same license:

Copyright (c) 2002-2015 Matt Johnston Portions copyright (c) 2004 Mihnea Stoenescu All rights reserved.

Permission is hereby granted, free of charge, to any person obtaining a copy of this software and associated documentation files (the "Software"), to deal in the Software without restriction, including without limitation the rights to use, copy, modify, merge, publish, distribute, sublicense, and/or sell copies of the Software, and to permit persons to whom the Software is furnished to do so, subject to the following conditions: The above copyright notice and this permission notice shall be included in all copies or substantial portions of the Software.

THE SOFTWARE IS PROVIDED "AS IS", WITHOUT WARRANTY OF ANY KIND, EXPRESS OR IMPLIED, INCLUDING BUT NOT LIMITED TO THE WARRANTIES OF MERCHANTABILITY, FITNESS FOR A PARTICULAR PURPOSE AND NONINFRINGEMENT. IN NO EVENT SHALL THE AUTHORS OR COPYRIGHT HOLDERS BE LIABLE FOR ANY CLAIM, DAMAGES OR OTHER LIABILITY, WHETHER IN AN ACTION OF CONTRACT, TORT OR OTHERWISE, ARISING FROM, OUT OF OR IN CONNECTION WITH THE SOFTWARE OR THE USE OR OTHER DEALINGS IN THE SOFTWARE.

-----  
LibTomCrypt and LibTomMath are written by Tom St Denis, and are Public Domain.  
-----

-----  
sshpty.c is taken from OpenSSH 3.5p1, Copyright (c) 1995 Tatu Ylonen <ylo@cs.hut.fi>, Espoo, Finland All rights reserved "As far as I am concerned, the code I have written for this software can be used freely for any purpose. Any derived versions of this software must be clearly marked as such, and if the derived work is incompatible with the protocol description in the RFC file, it must be called by a name other than "ssh" or "Secure Shell"  
-----

-----  
loginrec.c  
loginrec.h  
atomicio.h  
atomicio.c  
and strlcat() (included in util.c) are from OpenSSH 3.6.1p2, and are licensed under the 2 point BSD license.  
loginrec is written primarily by Andre Lucas, atomicio.c by Theo de Raadt.  
strlcat() is (c) Todd C. Miller  
-----

-----  
Import code in keyimport.c is modified from PuTTY's import.c, licensed as follows:

PuTTY is copyright 1997-2003 Simon Tatham.

Portions copyright Robert de Bath, Joris van Rantwijk, Delian Delchev, Andreas Schultz, Jeroen Massar, Wez Furlong, Nicolas Barry, Justin Bradford, and CORE SDI S.A.

Permission is hereby granted, free of charge, to any person obtaining a copy of this software and associated documentation files (the "Software"), to deal in the Software without restriction, including without limitation the rights to use, copy, modify, merge, publish, distribute, sublicense, and/or sell copies of the Software, and to permit persons to whom the Software is furnished to do so, subject to the following conditions:

The above copyright notice and this permission notice shall be included in all copies or substantial portions of the Software.

THE SOFTWARE IS PROVIDED "AS IS", WITHOUT WARRANTY OF ANY KIND, EXPRESS OR IMPLIED, INCLUDING BUT NOT LIMITED TO THE WARRANTIES OF MERCHANTABILITY, FITNESS FOR A PARTICULAR PURPOSE AND NONINFRINGEMENT. IN NO EVENT SHALL THE COPYRIGHT HOLDERS BE LIABLE FOR ANY CLAIM, DAMAGES OR OTHER LIABILITY,

WHETHER IN AN ACTION OF CONTRACT, TORT OR OTHERWISE, ARISING FROM, OUT OF OR IN CONNECTION WITH THE SOFTWARE OR THE USE OR OTHER DEALINGS IN THE SOFTWARE.

curve25519-donna:

Copyright 2008, Google Inc. All rights reserved.

Redistribution and use in source and binary forms, with or without modification, are permitted provided that the following conditions are met: Redistributions of source code must retain the above copyright notice, this list of conditions and the following disclaimer: redistributions in binary form must reproduce the above copyright notice, this list of conditions and the following disclaimer in the documentation and/or other materials provided with the distribution. Neither the name of Google Inc. nor the names of its contributors may be used to endorse or promote products derived from this software without specific prior written permission.

THIS SOFTWARE IS PROVIDED BY THE COPYRIGHT HOLDERS AND CONTRIBUTORS "AS IS" AND ANY EXPRESS OR IMPLIED WARRANTIES, INCLUDING, BUT NOT LIMITED TO, THE IMPLIED WARRANTIES OF MERCHANTABILITY AND FITNESS FOR A PARTICULAR PURPOSE ARE DISCLAIMED. IN NO EVENT SHALL THE COPYRIGHT OWNER OR CONTRIBUTORS BE LIABLE FOR ANY DIRECT, INDIRECT, INCIDENTAL, SPECIAL, EXEMPLARY, OR CONSEQUENTIAL DAMAGES (INCLUDING, BUT NOT LIMITED TO, PROCUREMENT OF SUBSTITUTE GOODS OR SERVICES; LOSS OF USE, DATA, OR PROFITS; OR BUSINESS INTERRUPTION) HOWEVER CAUSED AND ON ANY THEORY OF LIABILITY, WHETHER IN CONTRACT, STRICT LIABILITY, OR TORT (INCLUDING NEGLIGENCE OR OTHERWISE) ARISING IN ANY WAY OUT OF THE USE OF THIS SOFTWARE, EVEN IF ADVISED OF THE POSSIBILITY OF SUCH DAMAGE.

curve25519-donna: Curve25519 elliptic curve, public key function <http://code.google.com/p/curve25519-donna/> Adam Langley <agl@imperialviolet.org> Derived from public domain C code by Daniel J. Bernstein <djb@cr.yp.to> More information about curve25519 can be found here <http://cr.yp.to/ecdh.html>

djb's sample implementation of curve25519 is written in a special assembly language called qasm and uses the floating point registers.

This is, almost, a clean room reimplementation from the curve25519 paper. It uses many of the tricks described therein. Only the crecip function is taken from the sample implementation.

- Module: libjpeg-turbo

This software is based in part on the work of the Independent JPEG Group.

- Module: FreeBSD-libc

COPYRIGHT 8.2 (Berkeley) 3/21/94

All of the documentation and software included in the 4.4BSD and 4.4BSD-Lite Releases is copyrighted by The Regents of the University of California. Copyright 1979, 1980, 1983, 1986, 1988, 1989, 1991, 1992, 1993, 1994 The Regents of the University of California. All rights reserved. Redistribution and use in source and binary forms, with or without modification, are permitted provided that the following conditions are met:

1. Redistributions of source code must retain the above copyright notice, this list of conditions and the following disclaimer.

2. Redistributions in binary form must reproduce the above copyright notice, this list of conditions and the following disclaimer in the documentation and/or other materials provided with the distribution.

3. All advertising materials mentioning features or use of this software must display the following acknowledgement: This product includes software developed by the University of California, Berkeley and its contributors.

4. Neither the name of the University nor the names of its contributors may be used to endorse or promote products derived from this software without specific prior written permission.

THIS SOFTWARE IS PROVIDED BY THE REGENTS AND CONTRIBUTORS "AS IS" AND ANY EXPRESS OR IMPLIED WARRANTIES, INCLUDING, BUT NOT LIMITED TO, THE IMPLIED WARRANTIES OF MERCHANTABILITY AND FITNESS FOR A PARTICULAR PURPOSE ARE DISCLAIMED. IN NO EVENT SHALL THE REGENTS OR CONTRIBUTORS BE LIABLE FOR ANY DIRECT, INDIRECT, INCIDENTAL, SPECIAL, EXEMPLARY, OR CONSEQUENTIAL DAMAGES (INCLUDING, BUT NOT LIMITED TO, PROCUREMENT OF SUBSTITUTE GOODS OR SERVICES; LOSS OF USE, DATA, OR PROFITS; OR BUSINESS INTERRUPTION) HOWEVER CAUSED AND ON ANY THEORY OF LIABILITY, WHETHER IN CONTRACT, STRICT LIABILITY, OR TORT (INCLUDING NEGLIGENCE OR OTHERWISE) ARISING IN ANY WAY OUT OF THE USE OF THIS SOFTWARE, EVEN IF ADVISED OF THE POSSIBILITY OF SUCH DAMAGE.

The Institute of Electrical and Electronics Engineers and the American National Standards Committee X3, on Information Processing Systems have given us permission to reprint portions of their documentation.

In the following statement, the phrase "this text" refers to portions of the system documentation.

Portions of this text are reprinted and reproduced in electronic form in the second BSD Networking Software Release, from IEEE Std 1003.1-1988, IEEE Standard Portable Operating System Interface for Computer Environments (POSIX), copyright C 1988 by the Institute of Electrical and Electronics Engineers, Inc. In the event of any discrepancy between these versions and the original IEEE Standard, the original IEEE Standard is the referee document.

In the following statement, the phrase "This material" refers to portions of the system documentation.

This material is reproduced with permission from American National Standards Committee X3, on Information Processing Systems. Computer and Business Equipment Manufacturers Association (CBEMA), 311 First St., NW, Suite 500, Washington, DC 20001-2178. The developmental work of Programming Language C was completed by the X3J11 Technical Committee.

The views and conclusions contained in the software and documentation are those of the authors and should not be interpreted as representing official policies, either expressed or implied, of the Regents of the University of California.

- Module: openldap

The OpenLDAP Public License Version 2.8, 17 August 2003

Redistribution and use of this software and associated documentation ("Software"), with or without modification, are permitted provided that the following conditions are met:

1. Redistributions in source form must retain copyright statements and notices,



2. Redistributions in binary form must reproduce applicable copyright statements and notices, this list of conditions, and the following disclaimer in the documentation and/or other materials provided with the distribution, and

3. Redistributions must contain a verbatim copy of this document.

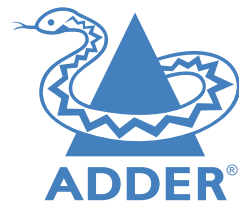
The OpenLDAP Foundation may revise this license from time to time. Each revision is distinguished by a version number. You may use this Software under terms of this license revision or under the terms of any subsequent revision of the license.

THIS SOFTWARE IS PROVIDED BY THE OPENLDAP FOUNDATION AND ITS CONTRIBUTORS ``AS IS'' AND ANY EXPRESSED OR IMPLIED WARRANTIES, INCLUDING, BUT NOT LIMITED TO, THE IMPLIED WARRANTIES OF MERCHANTABILITY AND FITNESS FOR A PARTICULAR PURPOSE ARE DISCLAIMED. IN NO EVENT SHALL THE OPENLDAP FOUNDATION, ITS CONTRIBUTORS, OR THE AUTHOR(S) OR OWNER(S) OF THE SOFTWARE BE LIABLE FOR ANY DIRECT, INDIRECT, INCIDENTAL, SPECIAL, EXEMPLARY, OR CONSEQUENTIAL DAMAGES (INCLUDING, BUT NOT LIMITED TO, PROCUREMENT OF SUBSTITUTE GOODS OR SERVICES; LOSS OF USE, DATA, OR PROFITS; OR BUSINESS INTERRUPTION) HOWEVER CAUSED AND ON ANY THEORY OF LIABILITY, WHETHER IN CONTRACT, STRICT LIABILITY, OR TORT (INCLUDING NEGLIGENCE OR OTHERWISE) ARISING IN ANY WAY OUT OF THE USE OF THIS SOFTWARE, EVEN IF ADVISED OF THE POSSIBILITY OF SUCH DAMAGE.

The names of the authors and copyright holders must not be used in advertising or otherwise to promote the sale, use or other dealing in this Software without specific, written prior permission.

Title to copyright in this Software shall at all times remain with copyright holders. OpenLDAP is a registered trademark of the OpenLDAP Foundation. Copyright 1999-2003 The OpenLDAP Foundation, Redwood City, California, USA. All Rights Reserved. Permission to copy and distribute verbatim copies of this document is granted.





[www.adder.com](http://www.adder.com)

## A

- Access control
  - configuration 42
- Access mode
  - shared & private 18
- Adapters
  - video 8
- Addressing 48
  - DNS 48
  - network issues 48
- Audio connections 11
- Auto calibrate 18

## C

- Cable specifications 52
- Calibrate
  - mouse 18
  - screen 18
- Configuration
  - advanced mouse 20
- Connections
  - audio 11
  - computer 7
  - console 10
  - link 11
  - overview 6
  - power 12
- Controls
  - viewer options 19

## D

- DHCP
  - discovering allocations 48
- Diagnostics 29
- DisplayPort 9
- DNS addressing 48
- Dump log 29
- DVI conversion 8

## F

- File Transfer 22
- Firewall 47
- Firmware upgrade 15

## H

- HDMI 35
- Host computer
  - configuration 44
- Hotkey sequences 52
  - codes and macros 52
- HTTP port
  - remote setting 28,41
  - when altered 47

## I

- Indicators 23
- IP access control 42
- IP address
  - remote setting 28,29,41
- IP network mask 28,41

## K

- Keyboard codes
  - sending 21
- Keyboard Control 21
- Keyboard layout
  - remote setting 34

## L

- LDAP 46
- Link connection 11
- LNK
  - indicator 23
- Local network
  - connection 47
- Logging 29,45

## M

- MAC address 40,41
- Mounting 6
- Mouse
  - advanced configuration 20
  - calibration 18
  - control 19
  - resync 18,19

## N

- Network configuration 41
- Networking issues 47

## O

- Optional extras 5

## P

- Power connection 12
- Power switching
  - on & off select 18
  - user permissions 32
  - via viewer 18
- Private
  - access mode 18
- PWR
  - indicator 23

## R

- Rack mount bracket 6
- Recover button 3,30
- Recovery mode 30
- Refresh screen 19
- Remote configuration
  - host configuration 44
  - logging and status 45
  - network configuration 41
  - unit configuration 34
  - user accounts 32
- Remote Support 29
- Reset page 30
- Resync mouse 19
- Router 47

## S

- Screen
  - refresh 19
- Server
  - configuration 44
- Shared
  - access mode 18
- Single mouse mode 19
- Supplied items 4
- Syslog 45
- Syslog Server 29

## T

- Time & date configuration 40

## U

- Unit Configuration 34
- Unit name
  - remote setting 34
- User accounts 32
- User configuration 32,33

## V

- Video format
  - conversion 8,9
- Video resolutions
  - maximum 7
- Video settings 20,21
- Virtual media. *See* File Transfer
- VNC port
  - remote setting 28,41
  - when altered 47